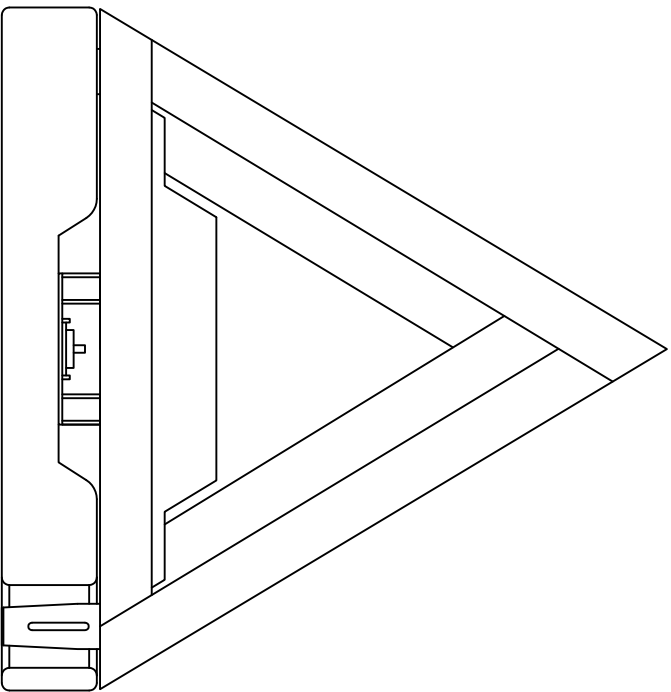
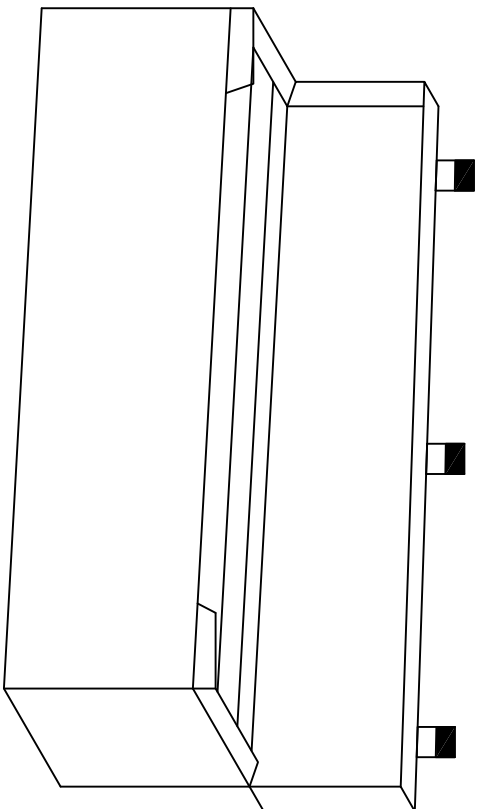


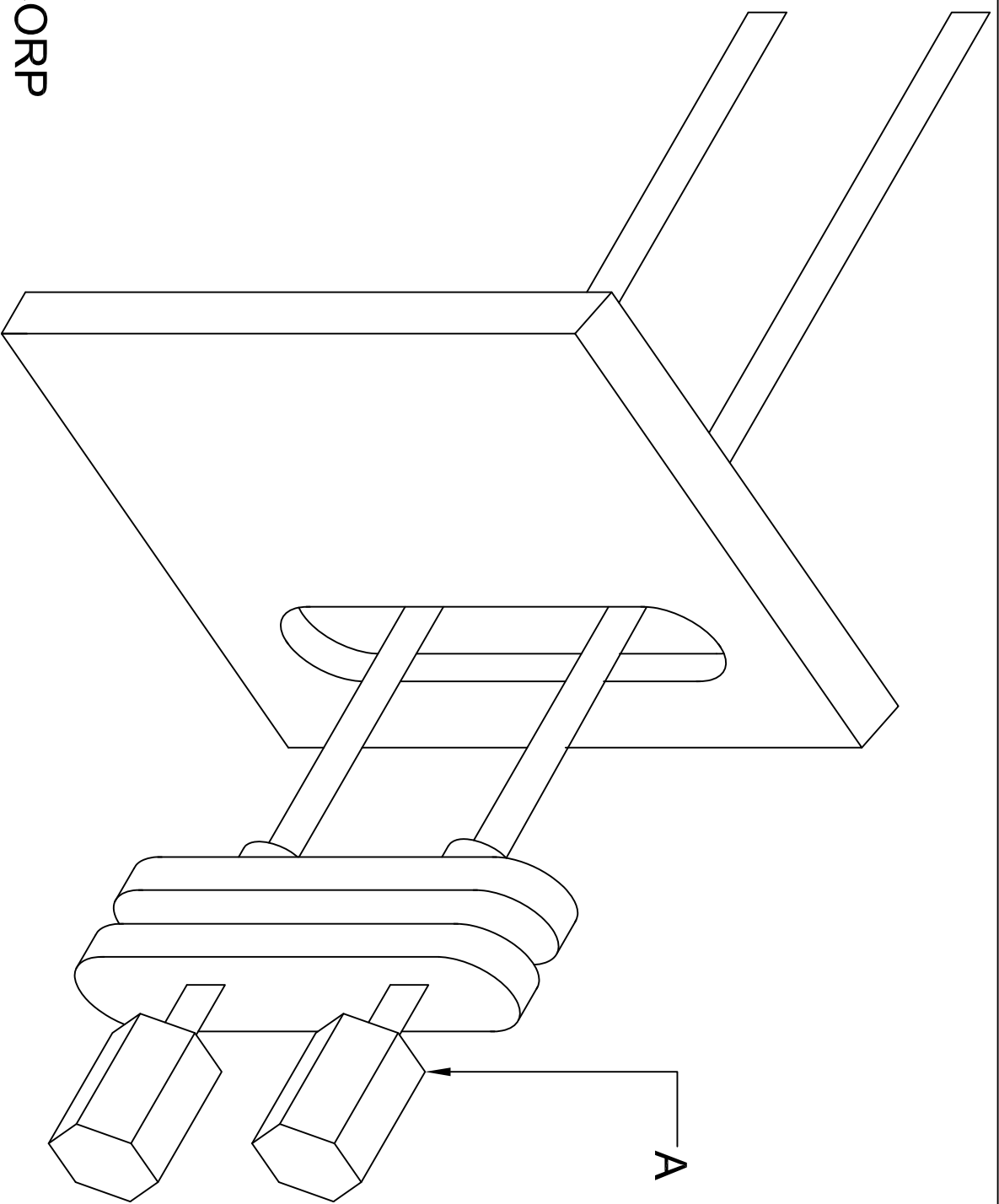
JAMES KING & CO.  
 TRIANGLE PART #1005  
 OR APPROVED EQUAL



**PA DEPARTMENT OF TRANSPORTATION**

REVISIONS			DRAWN BY		
NO.	DATE	BY	SCALE	DATE	SHEET
1	05-31-07	KNH	W/HM	04-23-92	1 OF 1
2	07-20-09	TOD	N/A	RED	EQN-66A
3	07-13-17	HMR			

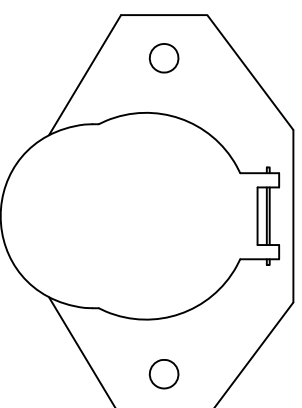
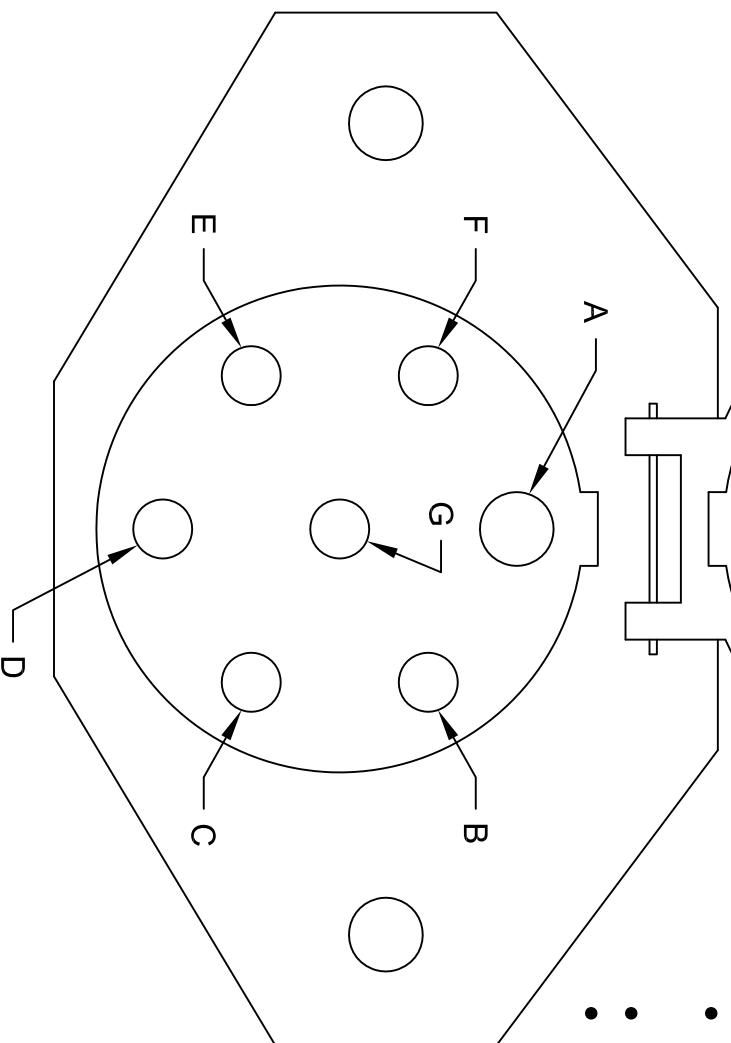
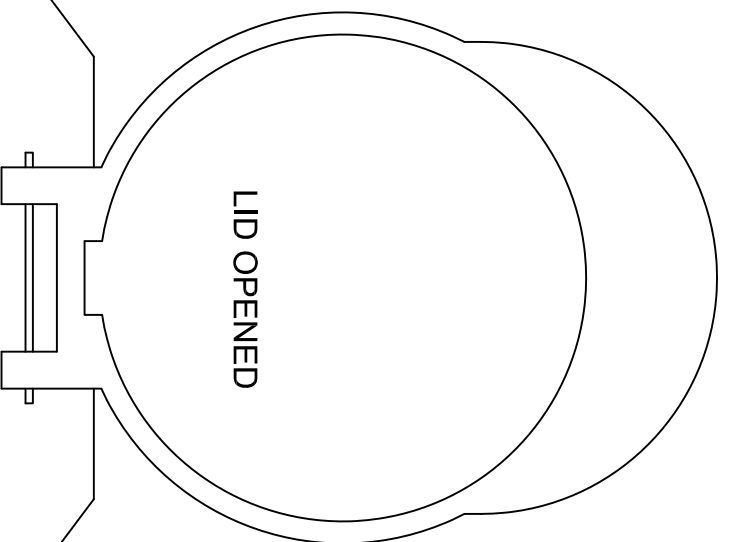
**TRIANGLE STORAGE BOX AND  
 BRACKET**



A.  
 PANA PACIFIC CORP  
 541 DIVISION STREET  
 CAMPBELL, CALIFORNIA 95008  
 408-374-7900

PART #531 277 C1

PA DEPARTMENT OF TRANSPORTATION			C.B. RADIO CONNECTIONS		
REVISIONS					
NO.	DATE	BY			
1	08-15-90	WHM			
2	07-02-97	DLW	DRAWN BY	WHM	SCALE
3	10-27-06	CJW	DATE	08-15-90	N/A
			CHKD BY	RED	EQN-78
			SHEET 1 OF 1		



**NOTES:**

- VIEW OF FEMALE CONNECTOR, STANDING AT REAR OF TRUCK, LOOKING AT THE CONNECTOR.
- BRAKE LIGHTS SHALL FUNCTION WITH TURN SIGNALS.
- WIRE SHALL BE 7 WAY (1-10 GAUGE; 6-12 GAUGE) PER ATA COLOR CODE, CLAMPED EVERY 18" MINIMUM.
- CONNECTION SHALL BE MADE USING FACTORY OEM TRAILER WIRING HARNESS.
- ALL CONNECTIONS SHALL BE WATER TIGHT.
- ALL PINS SHALL BE ROUND STYLE.

**WIRING NOTES:**

- A. WHITE: GROUND - 10
- B. BLACK: MARKER -12
- C. YELLOW: LEFT TURN & BRAKE - 12
- D. RED: STOP / BRAKE -12
- E. GREEN: RIGHT TURN & BRAKE - 12
- F. BROWN: TAIL - 12
- G. BLUE: ABS -12

**PA DEPARTMENT OF TRANSPORTATION**

**REVISIONS**

NO.	DATE	BY	DESCRIPTION
1	08-02-18	KBD	WIRING DIAGRAM / 7 WAY ROUND PIN FEMALE CONNECTOR
2			
3			

WIRING DIAGRAM / 7 WAY ROUND

PIN FEMALE CONNECTOR

DRAWN BY JJB EQN-80A

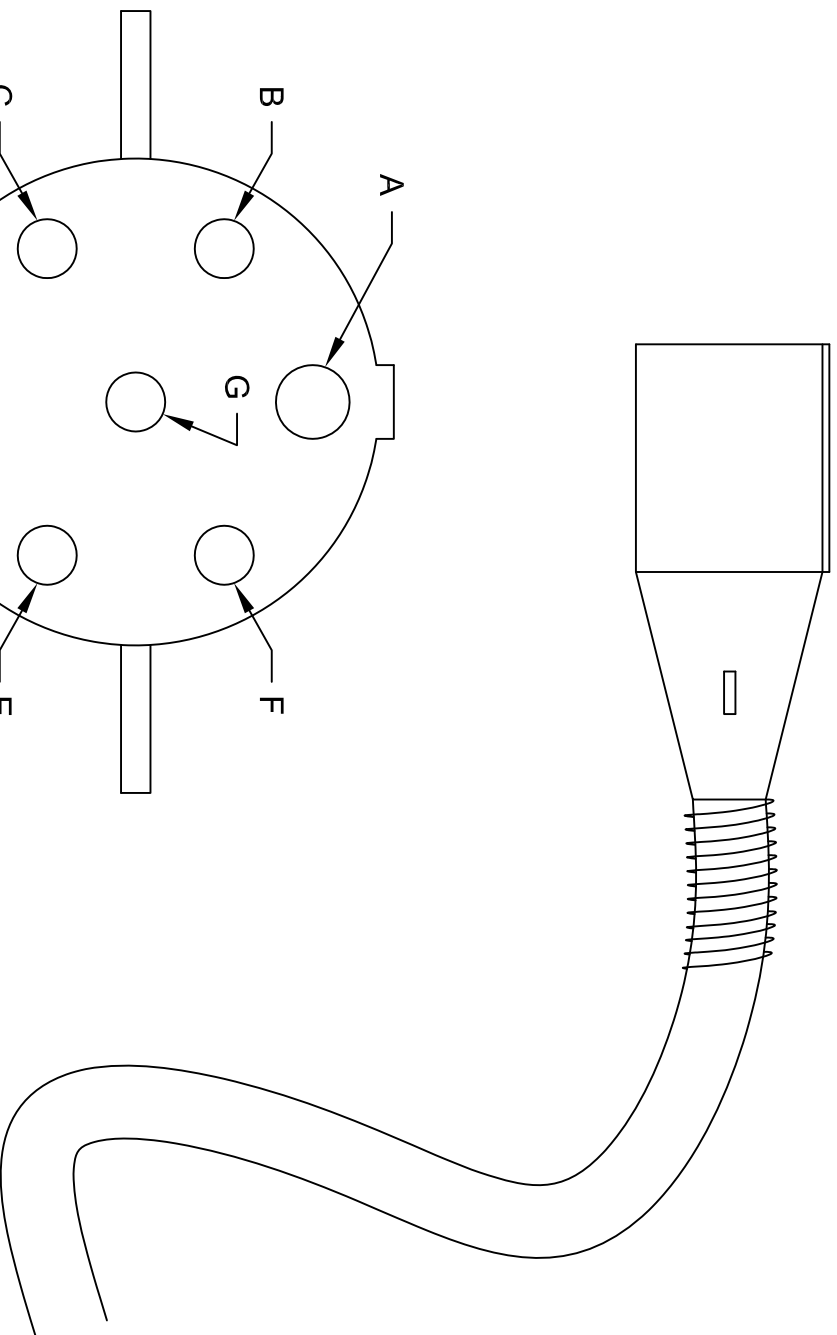
DATE 08-02-16 SHEET 1 OF 1

**NOTES:**

To extend 8ft. beyond pintle.

**WIRING NOTES:**

- A. WHITE: GROUND - 10
- B. BLACK: MARKER -12
- C. YELLOW: LEFT TURN & BRAKE - 12
- D. RED: STOP / BRAKE -12
- E. GREEN: RIGHT TURN & BRAKE - 12
- F. BROWN: TAIL - 12
- G. BLUE: ABS -12



**PA DEPARTMENT OF TRANSPORTATION**

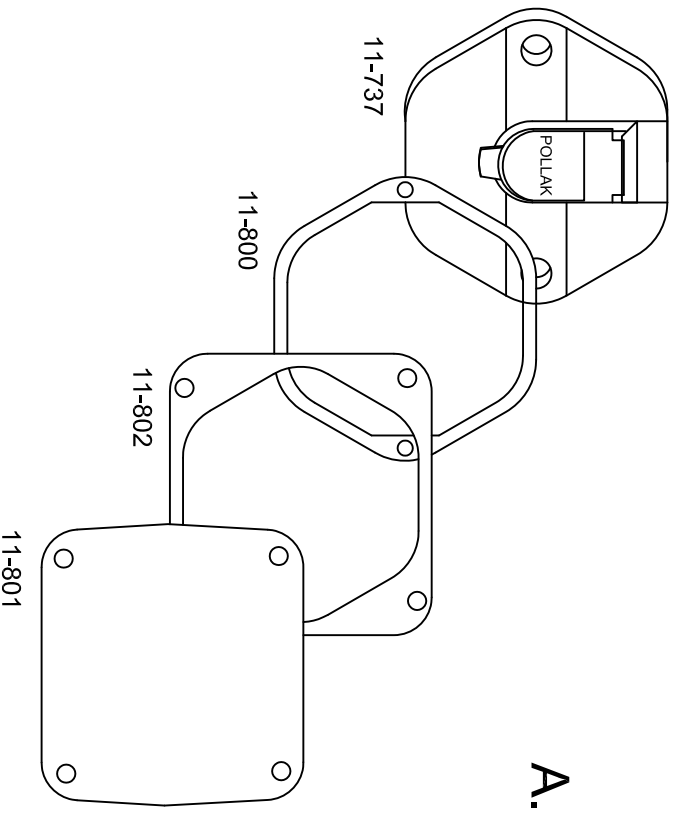
**REVISIONS**

NO.	DATE	BY	DESCRIPTION
1	5-16-2018	KBD	ROUND PIN MALE CONNECTOR
2			
3			

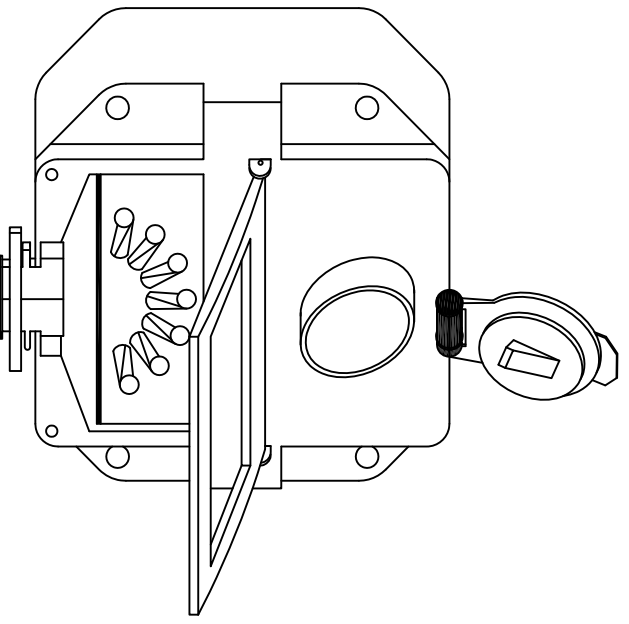
**WIRING DIAGRAM / 7 WAY**

**ROUND PIN MALE CONNECTOR**

DRAWN BY	SCALE	EQN-80B
JJB	N/A	
DATE	CHKD BY	SHEET 1 OF 1
08-02-16		



A. POLLAK TRUCKLITE



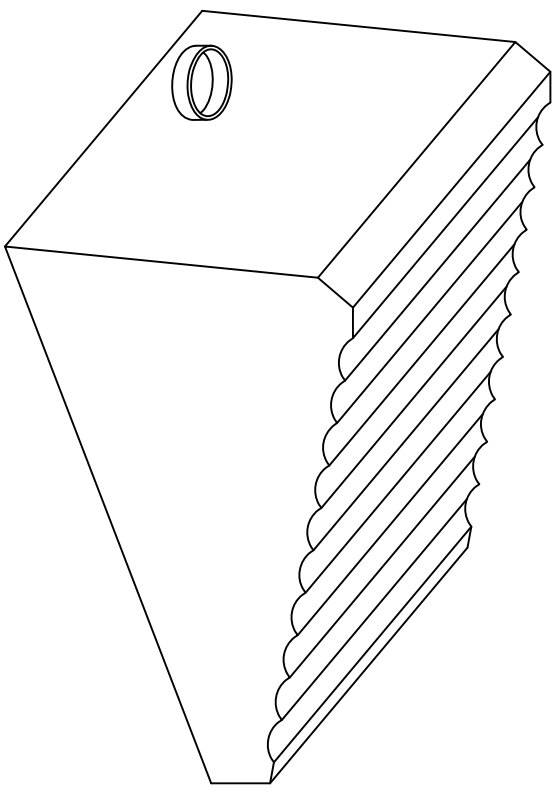
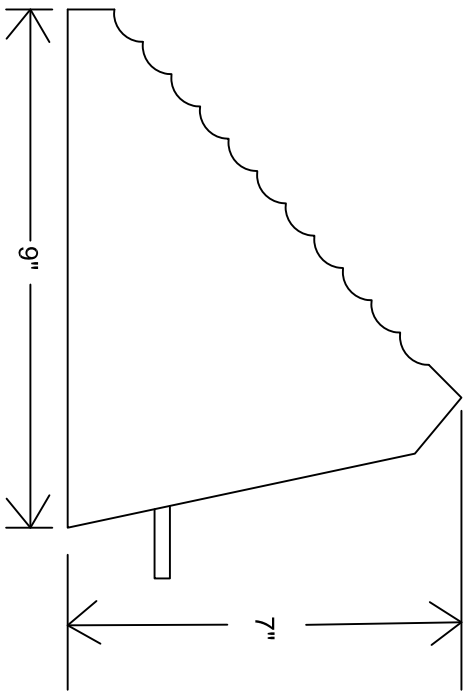
1. 7 WAY SPLIT PIN RECEPTACLE MEETING S.A.E. J5553 & J555A.
2. EXACT LOCATION SHALL BE DETERMINED UPON AWARD OF BID PRIOR TO PILOT MODEL.
3. WIRING SHALL BE IN CONFORMANCE WITH ATA COLOR CODING SYSTEM.
4. SEALED AND WEATHER-RESISTANT
5. REPLACEABLE CIRCUIT BREAKERS ( 15 AMP / OR 20 AMP).
6. REFERENCED ACCEPTABLE MODELS
  - A. POLLACK
    - 11-737
    - 11-800
    - 11-801
    - 11-802

(ALL ITEMS ARE REQUIRED TO MAKE UP THE COMPLETE ASSEMBLY)  
 B. TRUCK-LITE PART NO. 50806-COMplete.

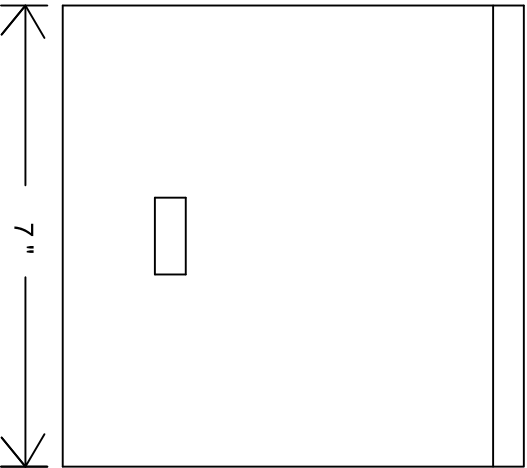
**NOTE: NO SUBSTITUTE**

REVISIONS				7 WAY TRAILER CONNECTOR			
NO.	DATE	BY		DATE	SCALE	CHECKED BY	SHEET
1	03-30-00	GAH		11-21-97	N/A	RED	1 OF 1
2	02-27-07	CJW					
3							

PA DEPARTMENT OF TRANSPORTATION



FINAL MOUNTING LOCATION SHALL BE DETERMINED AT THE PRE-BUILD MEETING. CHOCK HOLDERS SHALL BE ALUMINUM. TWO CHOCKS PER TRUCK SHALL BE SUPPLIED. CHOCKS SHALL HAVE 4 FEET OF  $\frac{3}{8}$  INCH NYLON ROPE CONNECTING THE TWO CHOCKS TOGETHER.

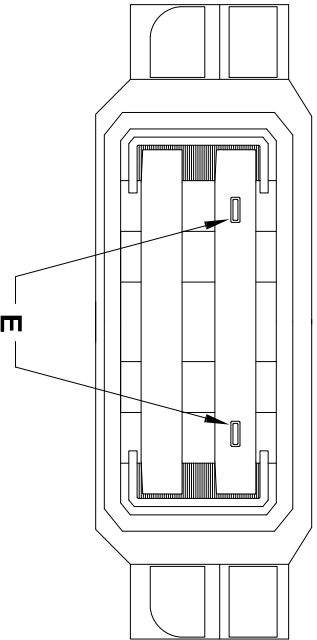


**PA DEPARTMENT OF TRANSPORTATION**

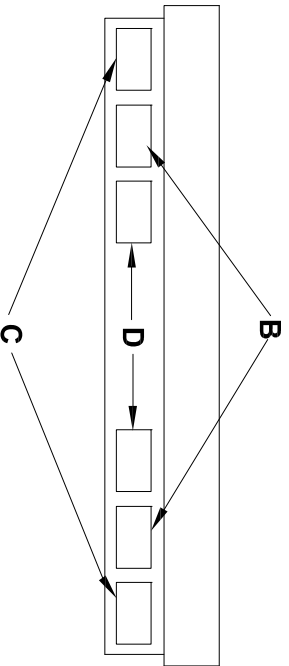
REVISIONS			7" X 9" X 7" CHOCK AND HOLDER		
NO.	DATE	BY	DRAWN BY	SCALE	
1			JJB	N/A	EQN-82D
2					
3					

DATE 07-22-15 SHEET 1 OF 1

FRONT VIEW



REAR VIEW

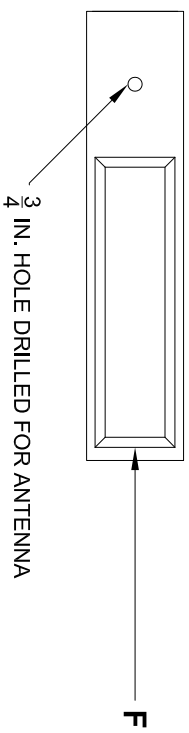


The purpose of this drawing is to show locations for Body Lighting, Whelen part # PADOTSY8.

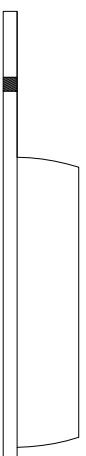
- A. LINZ6AD Amber Warning Light, grommet (flush) mounted, one each side.
- B. M6BUD Back up Lights with Brush Guards.
- C. M5BTTD Stop / Tail / Turn Lights with Brush Guards.
- D. M6AD Amber Warning Lights with Brush Guards.
- E. LINZ6AD Amber Warning Light, both grommet mounted (flush with Front Grill).
- F. R10PADOT, R10-Mini Bar Warning Light.

PLATFORM MOUNTED  
LED LIGHT BAR & ANTENNA HOLE

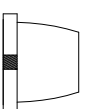
TOP VIEW



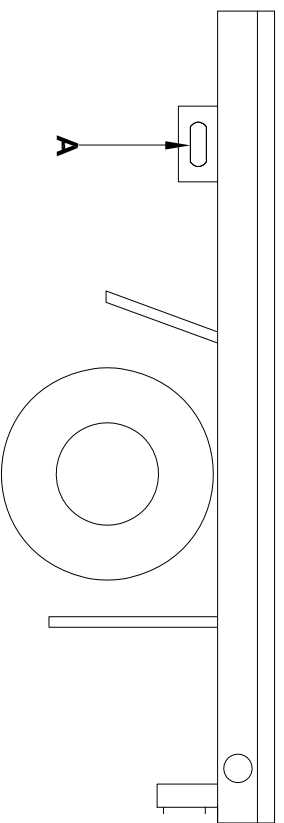
FRONT VIEW



SIDE VIEW



SIDE VIEW



PA DEPARTMENT OF TRANSPORTATION

UNIVERSAL  
TRUCK LIGHTING

REVISIONS			UNIVERSAL TRUCK LIGHTING		
NO.	DATE	BY	DRAWN BY	SCALE	TOD
1	08-06-12	MJW		N/A	
2					
3					

THIS VEHICLE SHALL COMPLY WITH THE RULES OF THE NATIONAL HIGHWAY TRAFFIC SAFETY ADMINISTRATION (NHTSA) IN THAT:

THE MOUNTING HEIGHT OF THE HORIZONTAL STRIPES ARE RESTRICTED TO THE SAME HEIGHT AS OTHER RETROREFLECTIVE DEVICES CURRENTLY REQUIRED BY STANDARD NUMBER 108. THE CENTER OF THE MATERIAL MUST NOT BE LESS THAN 15in. ABOVE THE ROAD SURFACE, AND THE UPPER EDGE NOT MORE THAN 60in. ABOVE IT.

REFLECTIVE MATERIAL SHALL BE APPLIED TO THE HORIZONTAL BAR OF THE REAR UNDERIDE DEVICE IN ADDITION TO THE FLOOR LEVEL HORIZONTAL STRIPE. THE UPPER CORNERS ARE TO BE MARKED BY TWO 90 DEGREE ANGLE BRACKETS OF WHITE STRIPES 12in. BY TWO INCHES WIDE, INDICATING THE WIDTH AND HEIGHT OF THE TRAILER.

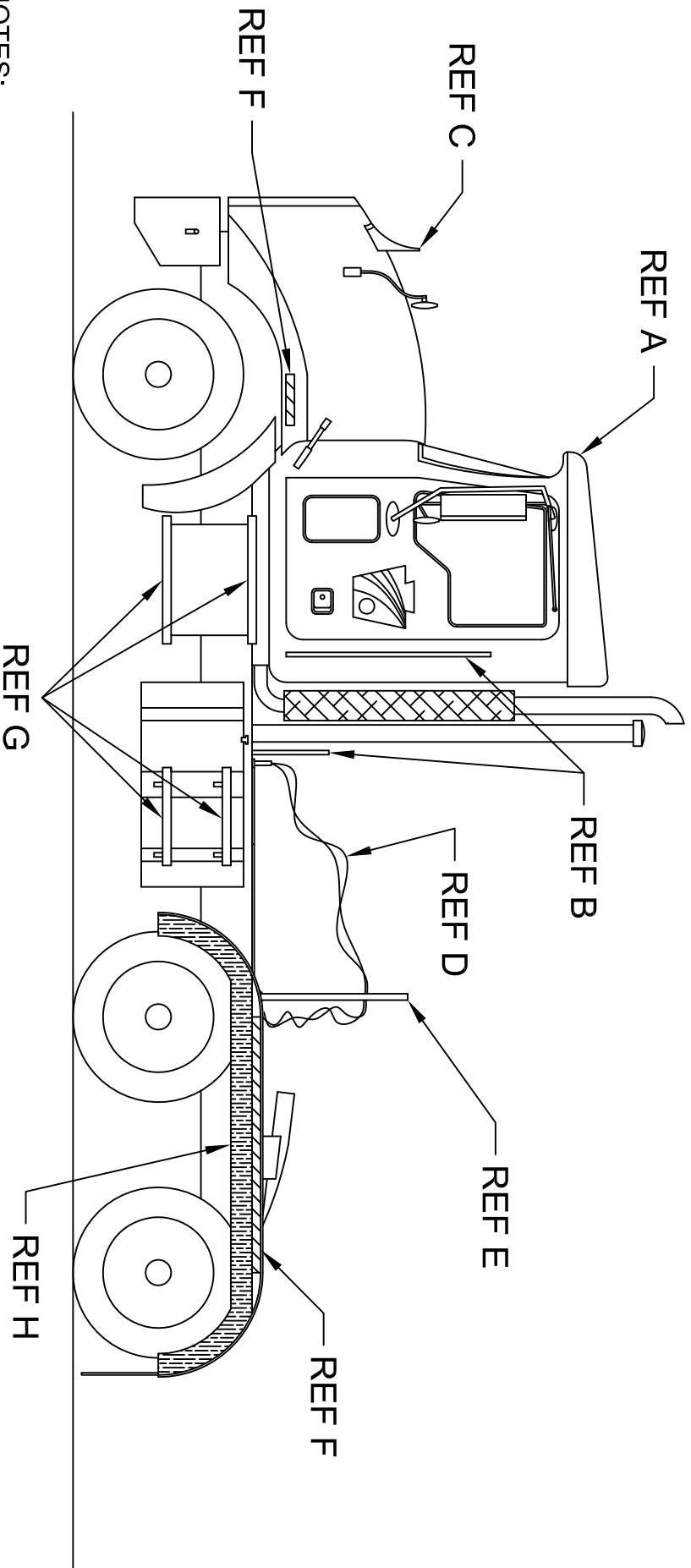
THE CONFIGURATION SHALL IDENTIFY THE VEHICLE AS TO ITS ESTIMATED SIZE AND THE CLOSING DISTANCE TO IT. THE DISTRIBUTION OF SPACES AND MATERIALS SHALL BE AS UNIFORM AS PRACTICAL AND INDICATE THE FULL LENGTH AND WIDTH OF THE VEHICLE. THE COLORS SHALL BE PLACED IN ALTERNATING SEQUENCE WITH MORE THAN TWO-THIRDS OF THE MATERIAL IN COLOR.

CONSPICUITY TAPE SHALL BE REFLECTORIZED. 2in. WIDE, MATERIAL SHALL BE APPLIED. MATERIAL SHALL BE RED/SILVER CONTINUOUS BACKING REFLEXITE CONSPICUITY II SYSTEM OR 3M SCOTCHLITE CONSPICUITY SHEETING SERIES 980.

THE MOST CURRENT REGULATIONS SHALL BE ADHERED TO.

REVISIONS			CONSPICUITY TAPE STRIPING REQUIREMENTS		
NO.	DATE	BY	DRAWN BY	SCALE	
1	05-16-02	DWG	DLW	N/A	EQN-127A
2	11-03-06	CJW	DATE 11-07-97	CHKD BY DMA	SHEET 1 OF 1
3	01-02-09	MHH			





**NOTES:**

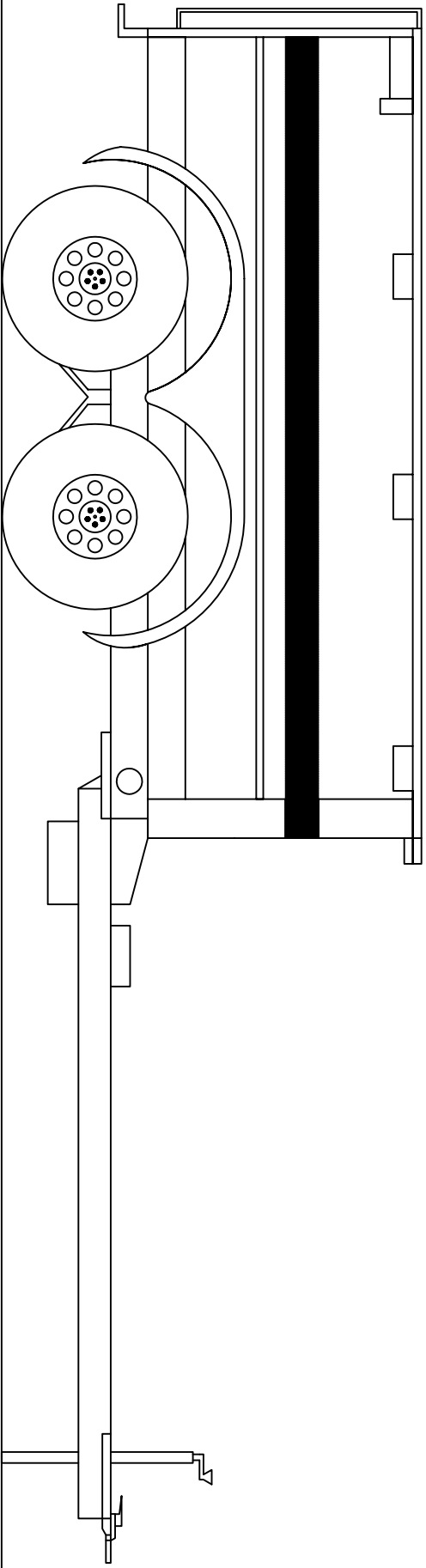
- A. EXTERIOR WINDSHIELD SUN SHADE (VISOR).
- B. HAND RAILS FOR THREE POINTS OF CONTACT. SHALL BE FURNISHED TO PROVIDE OPTIMUM SAFETY. NON-SKID PAINT OR RUBBER MAY BE UTILIZED.
- C. AIR DEFLECTOR. CLEAR OR SMOKED, HOOD MOUNTED AND SHALL NOT INTERFERE WITH HOOD HAND HOLD.
- D. LINES. SHALL BE A MINIMUM OF #12 HOSE AND SHALL BE A MINIMUM OF 12 FEET IN LENGTH OR SUFFICIENT LENGTH TO ALLOW COMPLETE ROTATION OF TRAILER.
- E. POST. SHALL BE APPROXIMATELY 36 INCHES TALL. SHALL BE MOUNTED TO BACK OF DECK PLATE FOR USE OF HANGING HOSES AND CABLES.
- F. CONSPICUITY TAPE. SHALL BE PLACED ON FRONT AND REAR FENDERS ON BOTH DRIVER AND PASSENGER SIDE.

- G. ENTRANCE STEPS. SHALL BE ALUMINUM OR STAINLESS STEEL, SERRATED. THE OUTER STOP EDGE MUST BE SERRATED IN LIEU OF PLAIN. TOP OF FIRST STEP SHALL BE APPROXIMATELY 21 INCHES ABOVE THE GROUND.
- H. SPRAY SUPPRESSION. SHALL BE PLACED ON THE COMPLETE LENGTH OF THE REAR FENDER ON BOTH DRIVER AND PASSENGER SIDE.

**PA DEPARTMENT OF TRANSPORTATION**

REVISIONS		LOWBOY TRACTOR	
NO.	DATE	BY	
1			
2			
3			

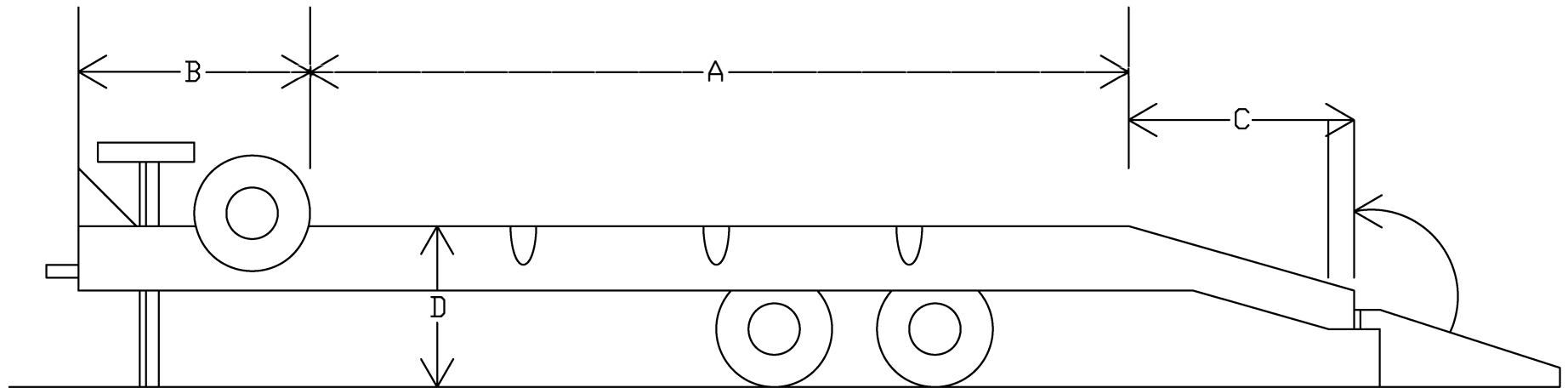
DRAWN BY		JJB	SCALE	N/A	EQN-131
DATE		06-23-15	CHG'D BY		SHEET 1 OF 3



**PA DEPARTMENT OF TRANSPORTATION**

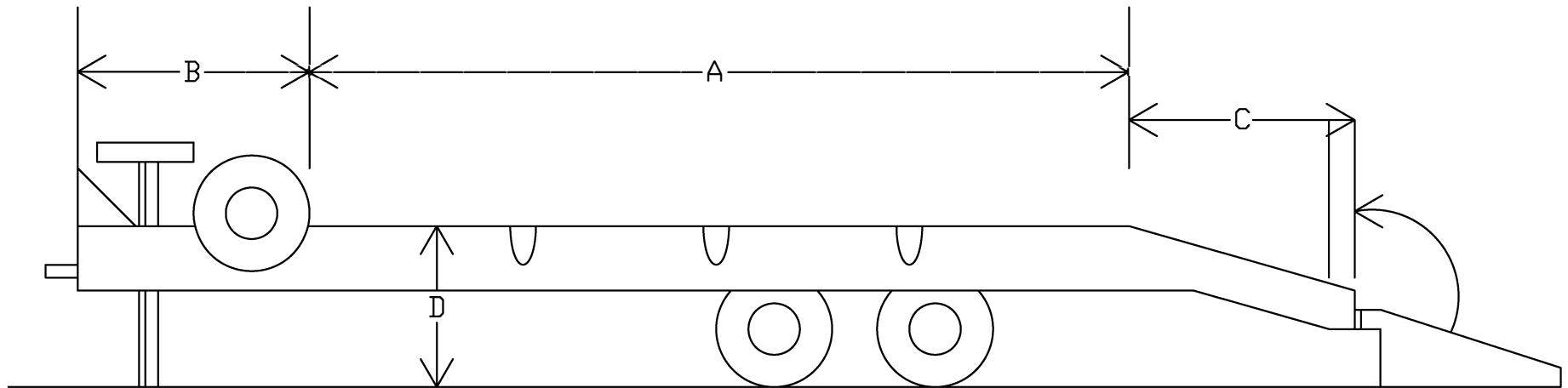
REVISIONS		TRAILER 7,000 LB. DUMP	
NO.	DATE	BY	

1	06-17-05	KNH	
2	11-03-05	KNH	<small>DRAWN BY</small> KNH <small>SCALE</small> N/A <small>EQN-141A</small>
3	07-18-07	BAG	<small>DATE</small> 11-03-05 <small>CHK'D BY</small> KGK <small>SHEET</small> 1 OF 1



1. SPARE TIRE SHALL BE MOUNTED IN APPROXIMATE LOCATION AS SHOWN ABOVE.
2. DIMENSIONS-
  - A=19 FOOT MINIMUM FLAT DECK
  - B=5 FOOT MINIMUM TONGUE
  - C=5 FOOT MINIMUM BEAVERTAIL
  - D=MAXIMUM 35in. - FROM GROUND TO TOP OF DECK
3. RAMPS SHALL HAVE A LOCKING MECHANISM TO ENSURE THAT THEY ARE POSITIVELY POSITIONED, IN THE UP/LEVEL TRAVEL POSITION.
4. THERE SHALL BE A LOCKABLE TOOL BOX OF SUFFICIENT SIZE TO HOLD, AND IT SHALL CONTAIN, 4-TIE DOWN CHAINS, AND 4 LOAD BINDERS.LANDING GEAR SHALL
5. BE LOCATED IN THE CENTER OF THE TONGUE AREA.

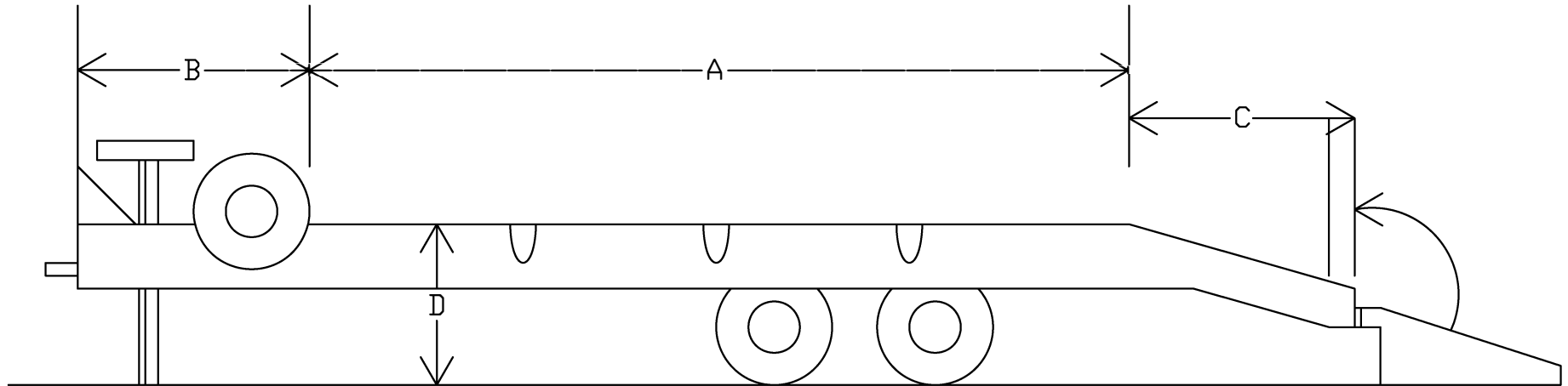
PA DEPARTMENT OF TRANSPORTATION					
REVISIONS			TRAILER 20,000 LB 19FT. DECK WITH 5FT. BEAVER TAIL (035310)		
NO.	DATE	BY	DRAWN BY	SCALE	
1	01-02-09	MHH		N/A	EQN-141B
2	06/17/05	KNH	DATE 06/17/05	CHK'D BY DMA	SHEET 1 OF 1



1. SPARE TIRE SHALL BE MOUNTED IN APPROXIMATE LOCATION AS SHOWN ABOVE.
2. DIMENSIONS-
  - A=22 FOOT MINIMUM FLAT DECK
  - B=5 FOOT MINIMUM TONGUE
  - C=5 FOOT MINIMUM BEAVERTAIL
  - D=MAXIMUM 35in. - FROM GROUND TO TOP OF DECK
3. RAMPS SHALL HAVE A LOCKING MECHANISM TO ENSURE THAT THEY ARE POSITIVELY POSITIONED, IN THE UP/LEVEL TRAVEL POSITION.
4. THERE SHALL BE A LOCKABLE TOOL BOX OF SUFFICIENT SIZE TO HOLD, AND IT SHALL CONTAIN, 4-TIE DOWN CHAINS, AND ALSO LOAD BINDERS.
5. LANDING GEAR SHALL BE CENTERED IN THE CENTER OF THE TONGUE AREA.

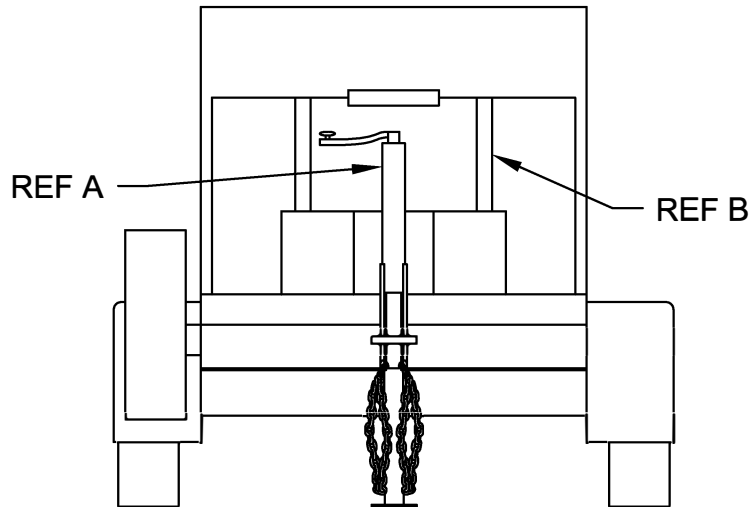
PA DEPARTMENT OF TRANSPORTATION

REVISIONS			TRAILER 40,000 LB 22FT. DECK WITH 5FT. BEAVER TAIL (035500)		
NO.	DATE	BY	DRAWN BY	SCALE	
1	06/26/04	BLD		N/A	EQN-141C
2	06/17/05	KNH	DATE 06/17/05	CHK'D BY KGK	SHEET 1 OF 1



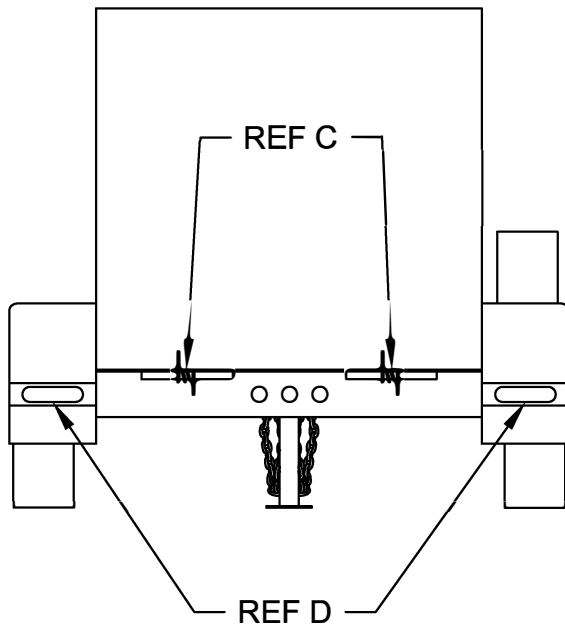
1. SPARE TIRE SHALL BE MOUNTED IN APPROXIMATE LOCATION AS SHOWN ABOVE.
2. DIMENSIONS-
  - A=19 FOOT MINIMUM FLAT DECK
  - B=5 FOOT MINIMUM TONGUE
  - C=5 FOOT MINIMUM BEAVERTAIL
  - D=MAXIMUM 35in. - FROM GROUND TO TOP OF DECK
3. RAMPS SHALL HAVE A LOCKING MECHANISM TO ENSURE THAT THEY ARE POSITIVELY POSITIONED, IN THE UP/LEVEL TRAVEL POSITION.
4. THERE SHALL BE A LOCKABLE TOOL BOX OF SUFFICIENT SIZE TO HOLD, AND IT SHALL CONTAIN, 4-TIE DOWN CHAINS, AND ALSO LOAD BINDERS.
5. LANDING GEAR SHALL BE CENTERED IN THE CENTER OF THE TONGUE AREA.

PA DEPARTMENT OF TRANSPORTATION					
REVISIONS			TRAILER 24,000 LB 19FT. DECK WITH 5FT. BEAVER TAIL (035520)		
NO.	DATE	BY	DRAWN BY	SCALE	
1	06/26/04	BLD		N/A	EQN-141D
2	06/17/05	KNH	DATE 06/17/05	CHK'D BY KGK	SHEET 1 OF 1



**NOTES:**

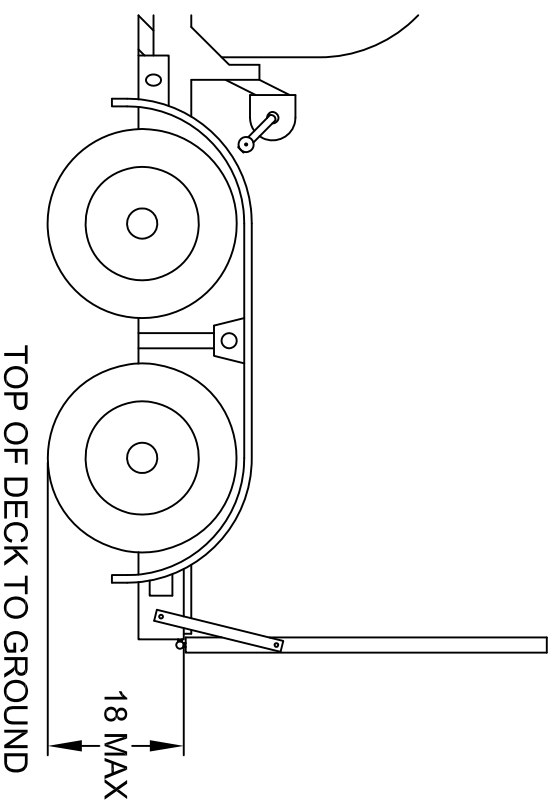
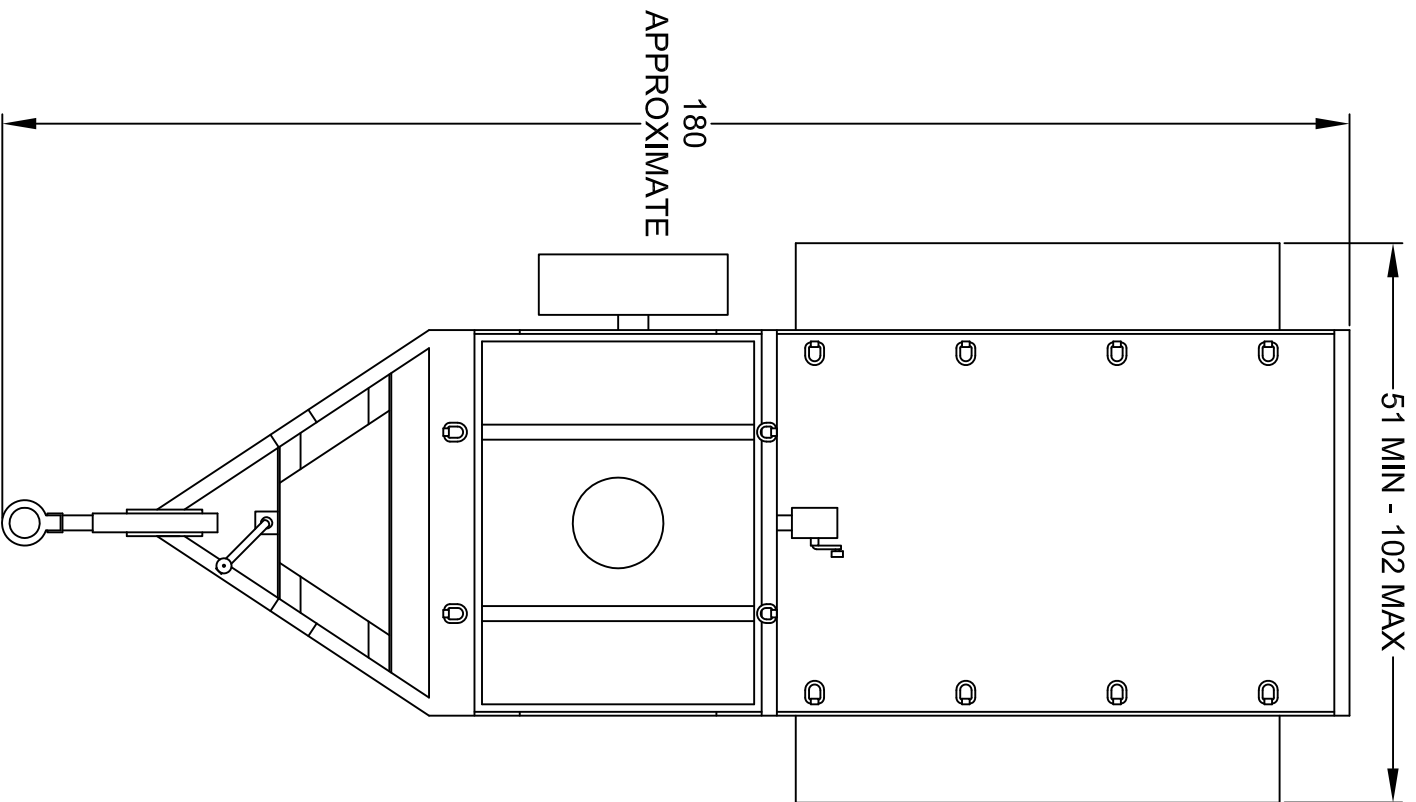
- A. LANDING GEAR. SHALL BE PROPERLY RATED AND CAPABLE OF SWINGING BACK OR UP FOR TRAVEL. THE LANDING GEAR SHALL BE CENTERLINE MOUNTED. REFERENCE EQN-84.
- B. SAFETY STRAPS. SHALL BE A MINIMUM OF TWO (2) TIE DOWN STRAPS TO MOUNT POLY TANK.
- C. SPRINGS. RAMP SHALL BE SPRING ASSISTED.
- D. LIGHTS. 12 VOLT. ALL LIGHTS SHALL BE LED, RUBBER MOUNTED, WITH SEALED WIRING HARNESS. GROTE ULTRA BLUE, OR EQUAL. REF. EQN-80A.



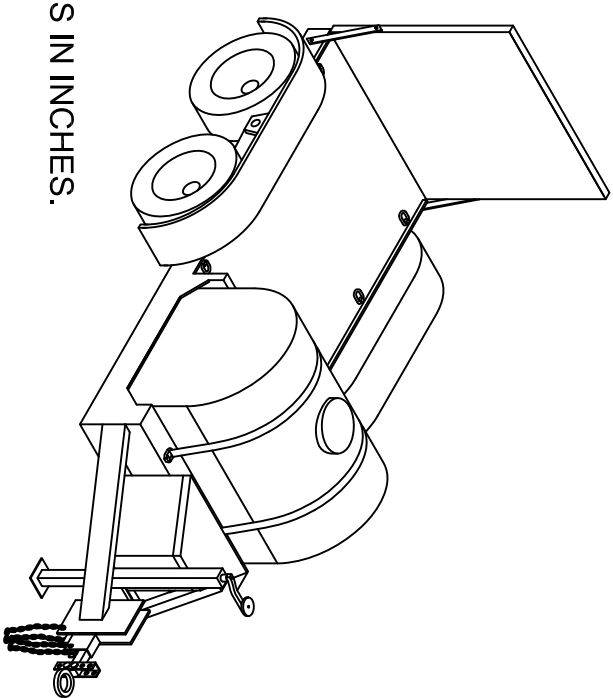
**ACCESSORIES:**

FOUR .3750 INCH X 10 FOOT GRADE 70 TRANSPORT TIE DOWN CHAINS AND .3750 INCH RATCHET SCREW TYPE BINDERS. ALL ITEMS TO BE STORED IN TOOLBOX.

PA DEPARTMENT OF TRANSPORTATION					
REVISIONS			SAW ROLLER TRAILER		
NO.	DATE	BY			
1					
2			DRAWN BY	SCALE	
			JJB	N/A	EQN-142
3			DATE	CHKD BY	
			07-31-15		SHEET 4 OF 4



**NOTES:**  
ALL DIMENSIONS IN INCHES.

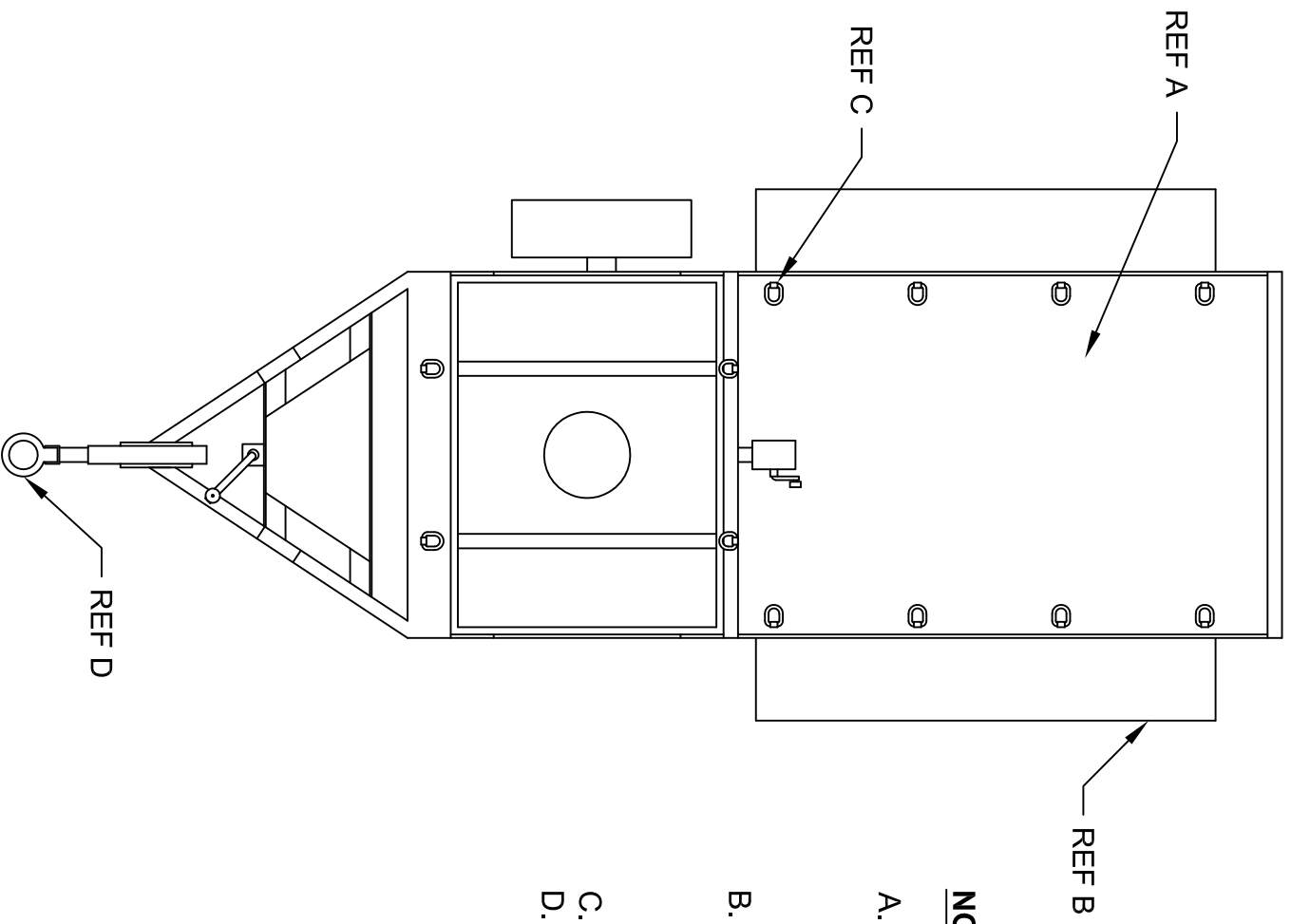


**PA DEPARTMENT OF TRANSPORTATION**

**SAW ROLLER TRAILER**

REVISIONS			DRAWN BY			SCALE		
NO.	DATE	BY	JJB	N/A	EQN-142			
1								
2								
3								

CHECKED BY			DATE		
			07-31-15		



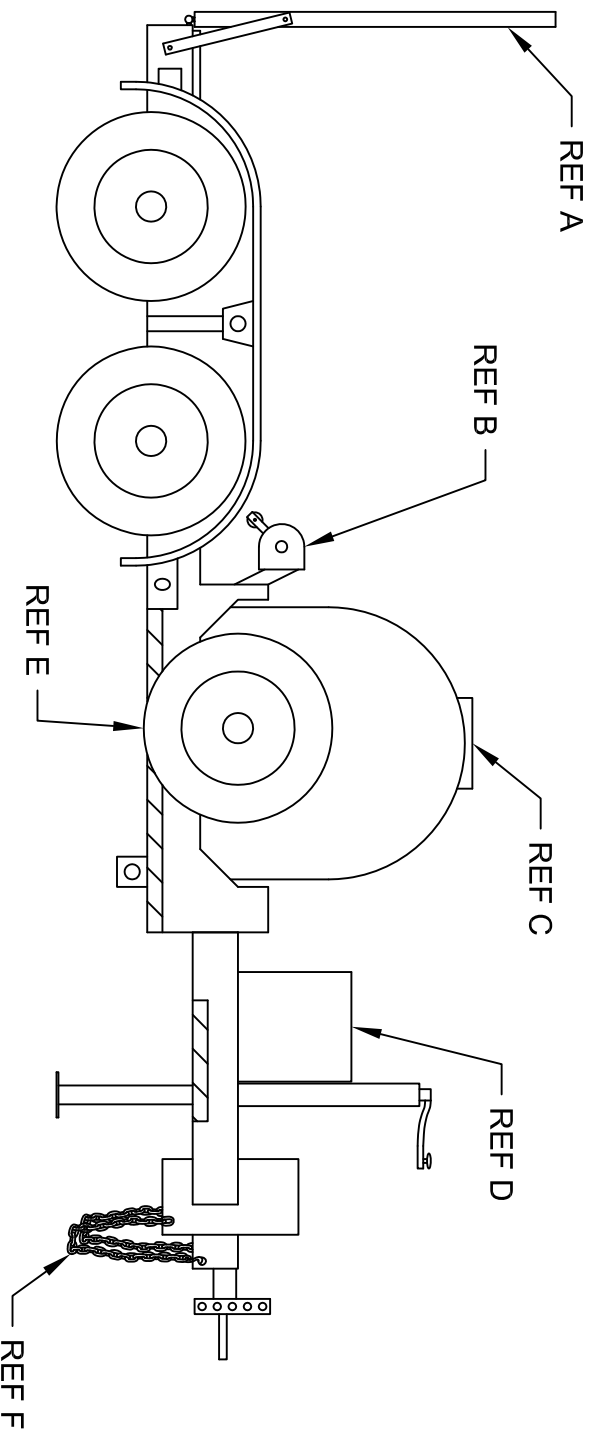
**NOTES:**

- A. DECKING. 1.50 INCH MINIMUM, PRESSURE TREATED WOOD, OAK OR APITONG FLOORING. ANTI-SKID PAINT SHALL BE APPLIED TO THE ENTIRE DECK AND RAMP SURFACE.
- B. FENDER. SHALL BE PROPERLY SUPPORTED TO ENSURE THE ABILITY TO SUPPORT A 200 LB OPERATOR. UPPER PORTION OF FENDER SHALL BE COATED WITH NON-SKID PAINT.
- C. TIE DOWNS. MINIMUM FOUR (4) D-RINGS PER SIDE. HITCH. 5-FOOT TONGUE WITH 3-INCH LUNETTE EYE. SHALL BE MINIMUM FOUR (4) VERTICAL POSITIONS (18 INCH - 32 INCH). REFERENCE EQN-84.
- D.

**PA DEPARTMENT OF TRANSPORTATION**

REVISIONS			SAW ROLLER TRAILER		
NO.	DATE	BY	DATE	SCALE	EQN-142
1			07-31-15	N/A	EQN-142
2					
3					





**NOTES:**

- A. RAMPS, SHALL BE A RAMP TO FACILITATE THE LOADING AND UNLOADING OF SAWS AND ROLLERS. RAMP SHALL HAVE A POSITIVE LOCKING SYSTEM IN THE TRAVEL POSITION. RAMP SHALL BE COVERED WITH A NON-SKID SURFACE. SHALL BE SPRING ASSISTED.
- B. WINCH, SHALL BE A MANUAL HAND WINCH ASSEMBLY FOR LOADING EQUIPMENT.
- C. TANK, SHALL BE A 100 GALLON PLOY TANK WITH FILTER CAP/NECK, DRAIN AND VALVE ASSEMBLY.
- D. TOOLBOX, SHALL BE CONSTRUCTION YELLOW.
- E. SPARE TIRE, SHALL BE ONE SPARE WHEEL AND TIRE ASSEMBLY, MOUNTED ON A LOCKABLE BRACKET ASSEMBLY (NOT TO INTERFERE WITH USEABLE DECK SPACE).
- F. SAFETY CHAINS, SHALL BE TWO (2), MINIMUM .3750-INCH SIZE, NON-RUSTING, COIL-PROOF, HIGH TENSILE CHAINS (RATED AT GVWR OF TRAILER), FORGED STEEL HOOKS WITH SAFETY HASP TO FIT A MINIMUM 5/8 INCH D-RING (FROM TOW VEHICLE) AT THE END OF CHAIN AND THE OTHER END OF THE CHAIN SHALL BE PERMANENTLY MOUNTED TO TRAILER. REFERENCE EQN-84.

**PA DEPARTMENT OF TRANSPORTATION**

**SAW ROLLER TRAILER**

REVISIONS			DRAWN BY			SCALE		
NO.	DATE	BY						
1			JJB	N/A				
2								
3								

DATE 07-31-15 SHEET 3 OF 4

# SPECIFICATIONS LED WARNING LIGHTS

THE WARNING LIGHTS DESCRIBED HERIN WILL BE USED FOR OFF/ON ROAD EQUIPMENT SUCH AS CARS, TRUCKS, MOTOR GRADERS, LOADERS, ETC. REQUIRING SAFETY LIGHTS. THE FOLLOWING SPECIFICATION DETAILS A 360° HIGH QUALITY SELF-CONTAINED LED MINI LIGHTBAR FOR USE ON A VARIETY OF VEHICLE TYPES:

1. THE LED MINI LIGHT BAR SHALL MEET J845 MAY97, CLASS 1 IN AMER AND SHALL BE AMECA CERTIFIED. THE PERMANENT MOUNT LED MINI BAR SHALL FEATURE 14 MULTIPLE FLASH PATTERNS AND HAVE A MIMIMUM OF A SIX INCH PIGTAIL.
2. THE LED MINI LIGHTBAR SHALL FEATURE SOLID-STATE CIRCUITRY, POLARITY PROTECTION AND NO MOVING PARTS FOR HIGHEST DEGREE OF RELIABILITY. THE MINI LIGHTBAR SHALL BE 12 VDC NOMINAL, STANDARD. THE MINI BAR SHALL HAVE A PUBLISHED AVERAGE AMP DRAW OF 3.6 AMPS AT 12 VDC (10.8 AMP PEAK AMP DRAW). THE MINI LIGHT BAR SHALL ALLOW OPERATION WITHOUT DEGRADATION OF INTENSITY OR FLASH RATE BETWEEN 10-16 VDC.
3. THE LED LIGHTBAR SHALL FEATURE A HEAVY DUTY EXTRUDED ALUMINUM BASE. THE PERMANENT MOUNT LED MINI LIGHTBAR SHALL NOT EXCEED 5 3/32" IN HEIGHT, 17 1/4" IN WIDTH, AND 6 5/16" IN DEPTH. THE LED MINI LIGHTBAR SHALL HAVE A BUILT IN ELECTRONIC FLASHER. THE LED MINI LIGHTBAR SHALL BE CONSTRUCTED WITH SIX (6) 400 SERIES LINEAR SUPER-LED WITH DEUTSCH CONNECTOR MODULES RESULTING IN A TOTAL OF 72 SUPER LED'S. THE LED MINI LIGHTBAR SHALL USE BOLTS FOR PERMANENT MOUNTING. THE LED MINI LIGHTBAR DOME SHALL FEATURE A SMOOTH OUTER SURFACE AND MADE OF POLYCARBONATE MATERIAL.
4. THE LED MINI LIGHT BAR SHALL BE WARRANTED FOR SIXTY MONTHS BY THE MANUFACTURER FROM THE DATE INSTALLED.

## PA DEPARTMENT OF TRANSPORTATION

REVISIONS			LED WARNING LIGHT		
NO.	DATE	BY			
1	05-29-07	KNH			
2	07-30-08	MHH	<small>DRAWN BY</small> DWG	<small>SCALE</small> N/A	EQN-210B
3	01-07-10	TOD	<small>DATE</small> 04-04-02	<small>CHK'D BY</small>	SHEET 1 OF 3
4	04-05-12	TOD			

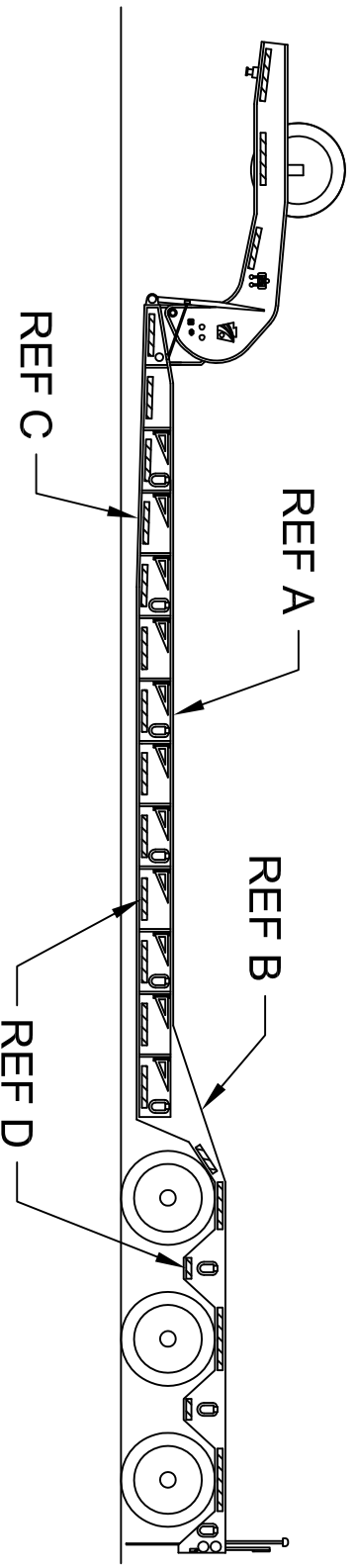
# SPECIFICATIONS LED WARNING LIGHTS

5. UNIT MUST BE CAPABLE OF BEING MOUNTED ON A SURFACE, OR ON A SELF-LEVELING MOUNT. ALL MOUNTING HARDWARE AND ROOF MOUNTING BOLTS SHALL BE INCLUDED. A SOFT RUBBER GASKET OR MOUNTING PAD SHALL BE PROVIDED TO FORM A WEATHERPROOF SEAL BETWEEN THE HOUSING AND VEHICLE ROOF, AFFORDING MAXIMUM VIBRATION ISOLATION.

IMPORTANT: ANY EXCEPTION TO THE ABOVE SPECIFICATIONS MUST BE CLEARLY STATED IN YOUR BID OR IT SHALL BE CONSIDERED AS "NON-RESPONSIVE".

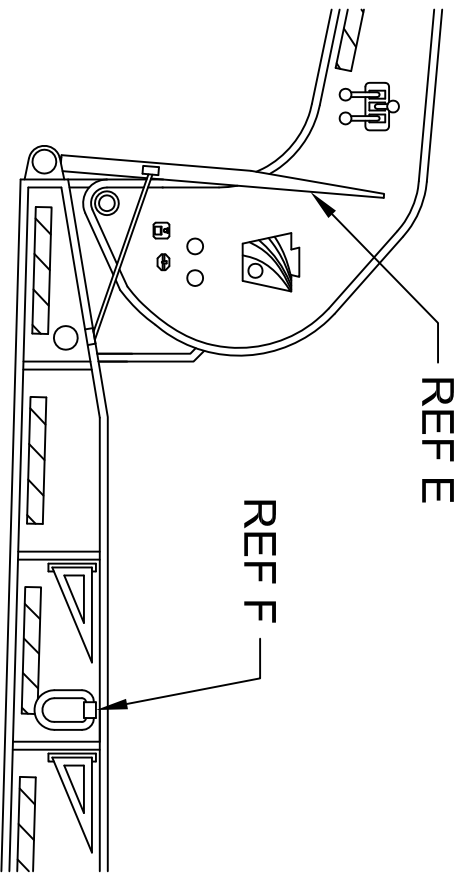
REFERENCE: WHELEN MODEL 01-0687181A1P OR A PRE-APPROVED EQUAL.

PA DEPARTMENT OF TRANSPORTATION						
REVISIONS			LED WARNING LIGHT			
NO.	DATE	BY				
1	05-29-07	KNH				
2	07-30-08	MHH	<small>DRAWN BY</small> DWG	<small>SCALE</small> N/A	EQN-210B	
3	01-07-10	TOD	<small>DATE</small> 04-04-02	<small>CHK'D BY</small> TOD	SHEET 2 OF 3	
4	04-05-12	TOD				



**NOTES:**

- A. PLATFORM. SHALL HAVE A MINIMUM 1 3/4 IN. OAK OR A MINIMUM 1 1/4 IN. APITONG FULL FLOOR.
- B. REAR RISER SECTION. SHALL RUN AT 3:1 RATIO FOR A MAXIMUM OF 18 DEGREES BETWEEN THE MAIN DECK, AND THE REAR FRAME AREA. SHALL ALSO HAVE A MAXIMUM OF 18 INCH DROP BETWEEN THE DECK AND THE REAR LOAD PLATFORM OF THE TRAILER.
- C. UNDER-SLOPE. THE BOTTOM BEAM SHALL HAVE A MINIMUM TAPER OF 9 FEET FRONT TO BACK TO EASE LOADING.
- D. CONSPICUITY TAPE. SHALL BE PLACED ON THE BOTTOM EDGE OF THE TRAILER AND THE EDGES SURROUNDING THE WHEELS.
- E. ACCESS RAMPS. TWO 41 IN. LONG X 22 IN. WIDE, FRONT FOLD-DOWN LOADING RAMPS WITH OAK INSERTS TO FORM A 7.2-DEGREE APPROACH TO THE MAIN DECK AREA. THESE SLIDING RAMPS SHALL DOUBLE HINGED AND SPRING ASSISTED.
- F. LASHING RINGS. SIXTEEN DROP FORGED LASHING D'S OF 1 IN. DIAMETER STEEL (C1030 STEEL CONSTRUCTION)



**PA DEPARTMENT OF TRANSPORTATION**

**REVISIONS**

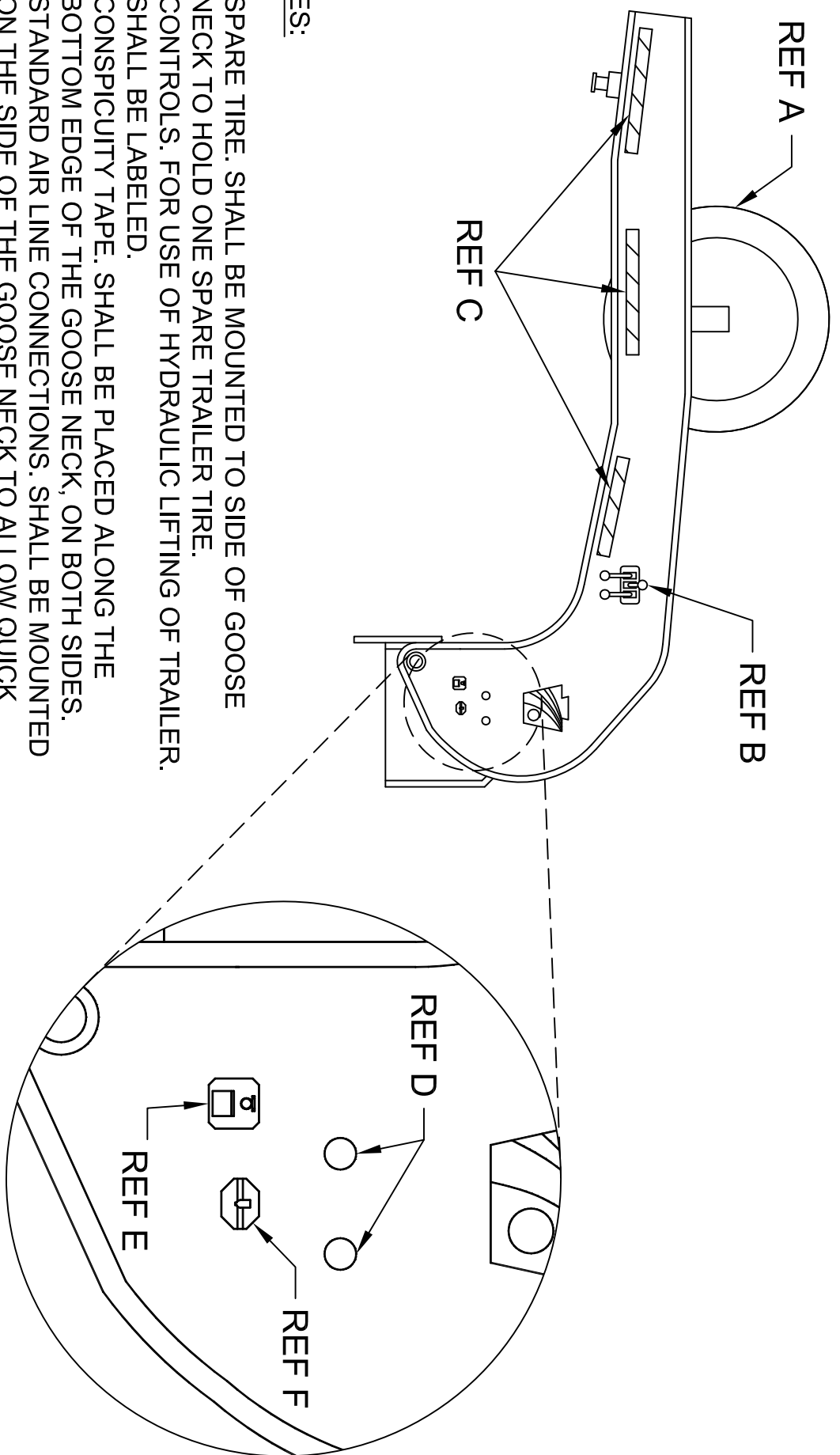
NO.	DATE	BY	LOWBOY PAVER STYLE TRAILER
1	08-08-18	KBD	
2			
3			

LOWBOY PAVER STYLE TRAILER

DRAWN BY	JJB	Checked With	
DATE	06-23-15	EDM-1097	
		Spec'd	
		N/A	
		N/A	

SHEET 250P

SHEET 1 OF 5



NOTES:

- A. SPARE TIRE. SHALL BE MOUNTED TO SIDE OF GOOSE NECK TO HOLD ONE SPARE TRAILER TIRE.
- B. CONTROLS. FOR USE OF HYDRAULIC LIFTING OF TRAILER. SHALL BE LABELED.
- C. CONSPICUITY TAPE. SHALL BE PLACED ALONG THE BOTTOM EDGE OF THE GOOSE NECK, ON BOTH SIDES. STANDARD AIR LINE CONNECTIONS. SHALL BE MOUNTED ON THE SIDE OF THE GOOSE NECK TO ALLOW QUICK CONNECTION BETWEEN GOOSE NECK AND TRAILER.
- E. 7 PIN CONNECTION. SHALL BE MOUNTED ON THE SIDE OF THE GOOSE NECK TO ALLOW QUICK CONNECTION BETWEEN GOOSE NECK AND TRAILER. REFERENCE EQN-81A.
- F. 2 PIN CONNECTION. SHALL BE MOUNTED ON THE SIDE OF THE GOOSE NECK TO ALLOW QUICK CONNECTION BETWEEN GOOSE NECK AND TRAILER. REFERENCE EQN-81A.

**PA DEPARTMENT OF TRANSPORTATION**

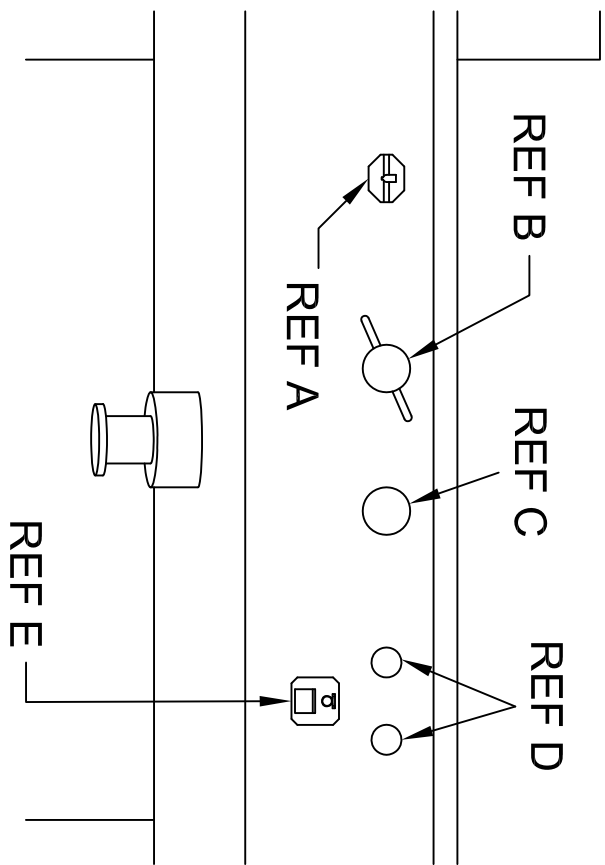
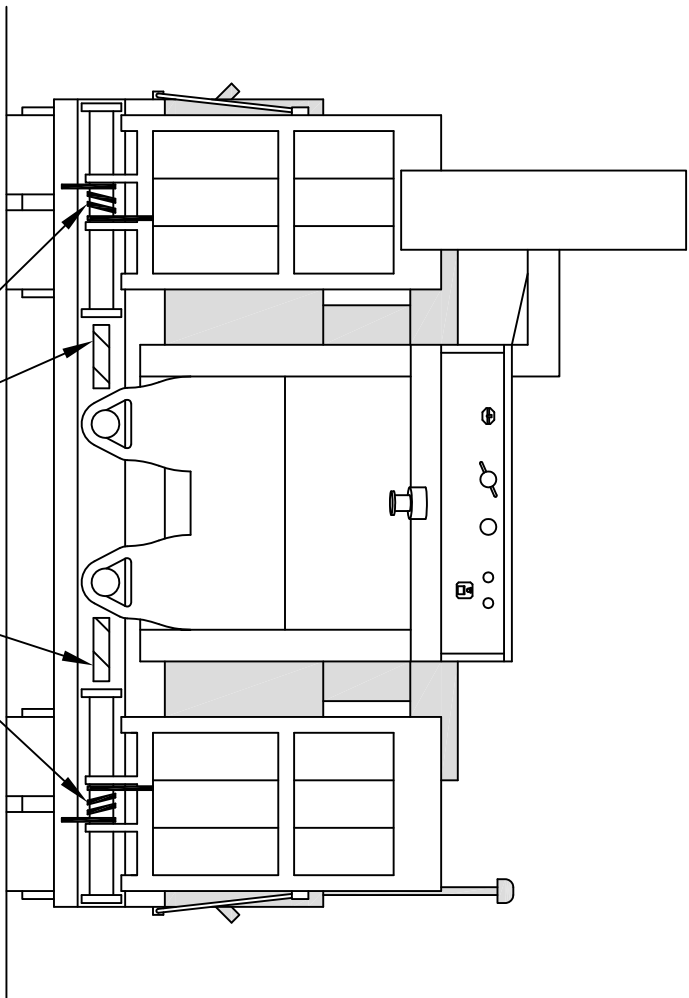
**REVISIONS**

NO.	DATE	BY	DESCRIPTION
1	08-08-18	KBD	LOWBOY PAVER STYLE TRAILER
2			
3			

DRAWN BY: JJB DATE: 06-23-15  
 CHECKED BY: N/A  
 SHEET 250P SHEET 2 OF 5

**NOTES:**

- A. 2 PIN CONNECTION. SHALL BE MOUNTED ON THE FRONT OF THE GOOSE NECK TO ALLOW QUICK CONNECTION BETWEEN TRACTOR AND GOOSE NECK.
- B. WET LINE PRESSURE. SHALL BE MOUNTED ON THE PASSENGER SIDE AND SHALL BE PLUMBED TO ACCEPT HYDRAULIC CONNECTIONS BETWEEN TRACTOR AND GOOSE NECK TO MAKE THE TRAILER COMPLETELY FUNCTIONAL AS A "WET UNIT". FITTINGS SHALL BE AEROQUIP PN#145135.
- C. WET LINE RETURN. SHALL BE MOUNTED ON THE DRIVER SIDE AND SHALL BE PLUMBED TO ACCEPT HYDRAULIC CONNECTIONS BETWEEN TRACTOR AND GOOSE NECK TO MAKE THE TRAILER COMPLETELY FUNCTIONAL AS A "WET UNIT". FITTINGS SHALL BE AEROQUIP PN#0451436.
- D. STANDARD AIR LINE CONNECTION. SHALL BE MOUNTED ON THE FRONT OF THE GOOSE NECK TO ALLOW QUICK CONNECTION BETWEEN TRACTOR AND GOOSE NECK.



**NOTES:**

- E. 7 PIN CONNECTION. SHALL BE MOUNTED ON THE FRONT OF THE GOOSE NECK TO ALLOW QUICK CONNECTION BETWEEN TRACTOR AND GOOSE NECK. REFERENCE EQN-81A.
- F. CONSPICUITY TAPE. SHALL BE PLACED ON THE BOTTOM OF THE FRONT OF THE TRAILER.
- G. SPRINGS. SHALL BE PLACED BETWEEN THE HINGES OF BOTH RAMPS TO ASSIST WITH LIFTING OF THE RAMPS.

**PA DEPARTMENT OF TRANSPORTATION**

**REVISIONS**

**LOWBOY PAVER STYLE TRAILER**

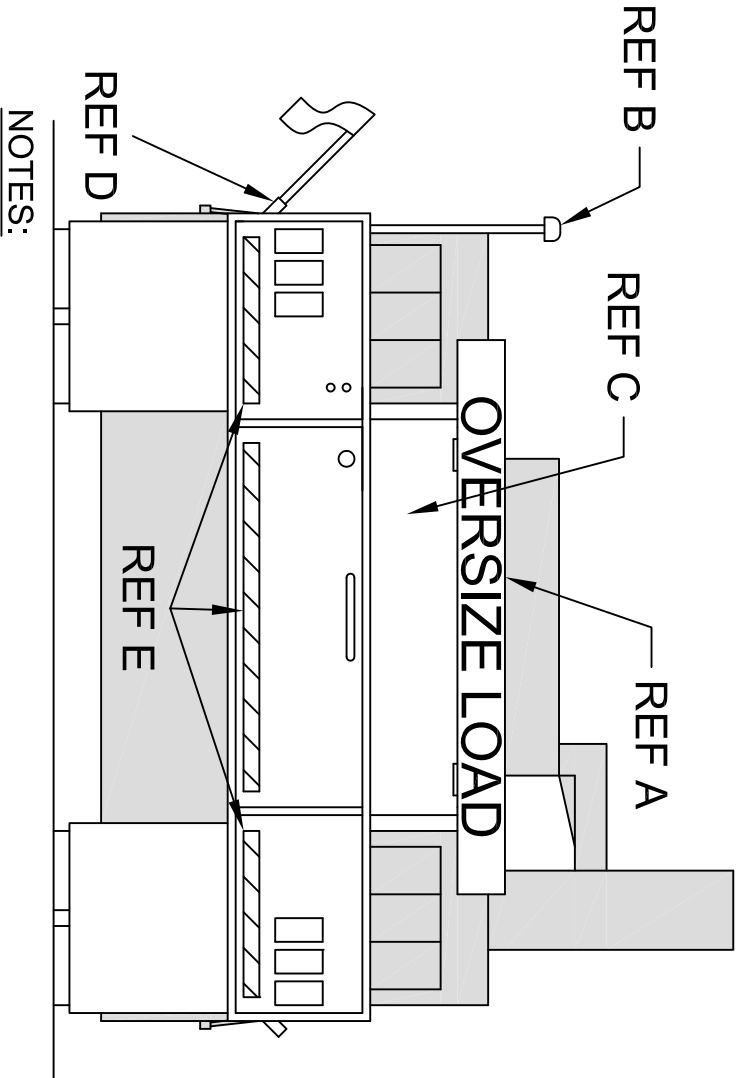
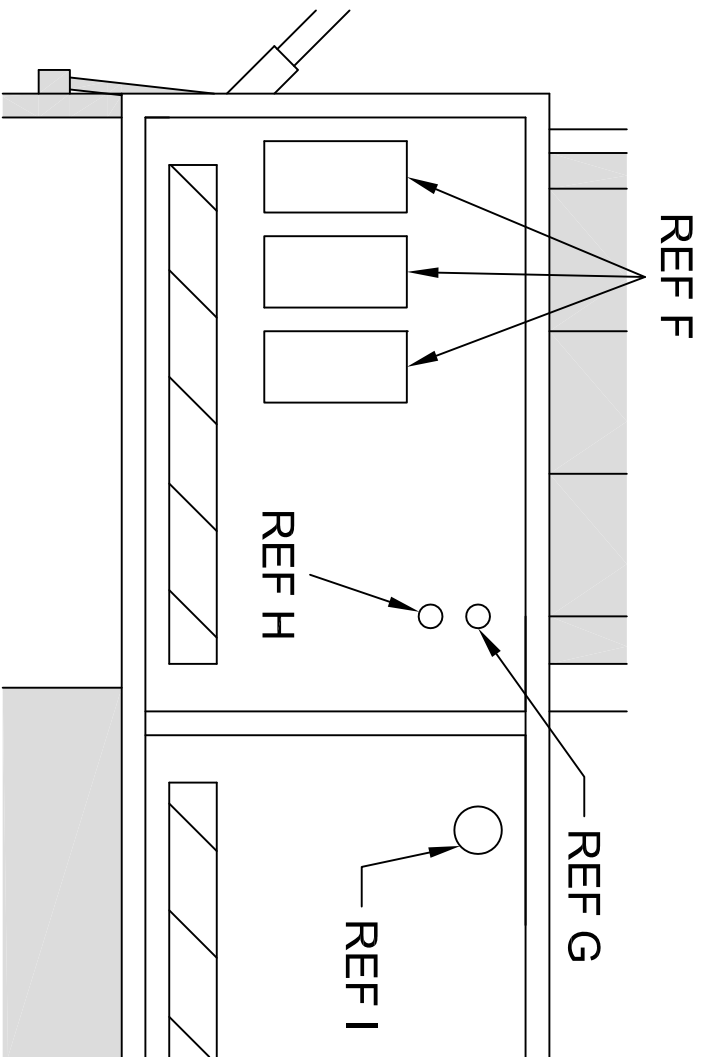
NO.	DATE	BY	DRAWN BY	DATE	CHG'D BY	DATE
1	08-08-18	KBD	JJB	06-23-15	N/A	N/A
2						
3						

Combined With **SHEET 250P**

EQN-1097 **SHEET 3 OF 5**

**NOTES:**

- A. SIGN SHALL BE MOUNTED TO THE TOP OF THE ROLLER STOPPER. SHALL BE HINGED TO ALLOW FLIP-UP USE ONLY WHILE HAULING AN OVERSIZE LOAD. REFERENCE EQN-569.
- B. WARNING LIGHT. SHALL BE MOUNTED ON DRIVER SIDE OF DECK, ABOVE THE ROLLER STOPPER TO ALLOW 360 DEGREES OF VISIBILITY.
- C. ROLLER STOPPER. MOUNTED ON THE BACK OF THE DECK TO STOP HAULED MACHINERY FROM ROLLING OFF THE DECK.
- D. FLAG HOLDER. SHALL BE MOUNTED ON BOTH DRIVER AND PASSENGER SIDE OF THE REAR OF THE TRAILER TO ALLOW USE OF CAUTION FLAGS WHILE HAULING AN OVERSIZE LOAD.
- E. CONSPICUITY TAPE. SHALL BE PLACED ON THE BOTTOM OF THE REAR OF THE TRAILER.



**NOTES:**

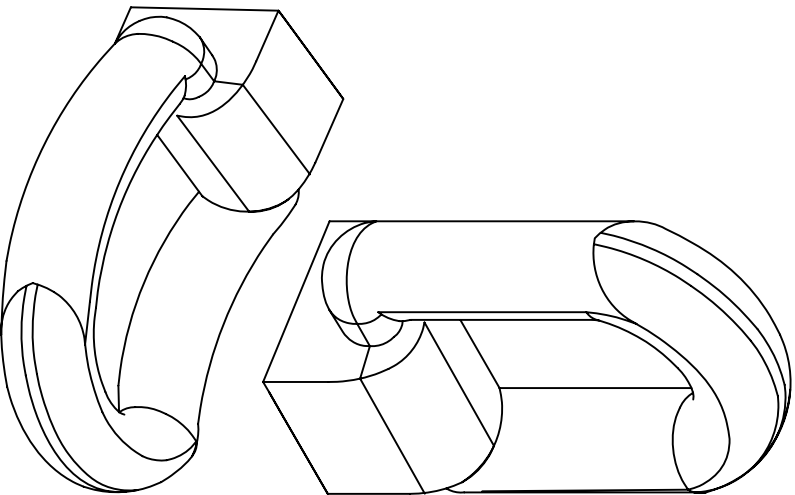
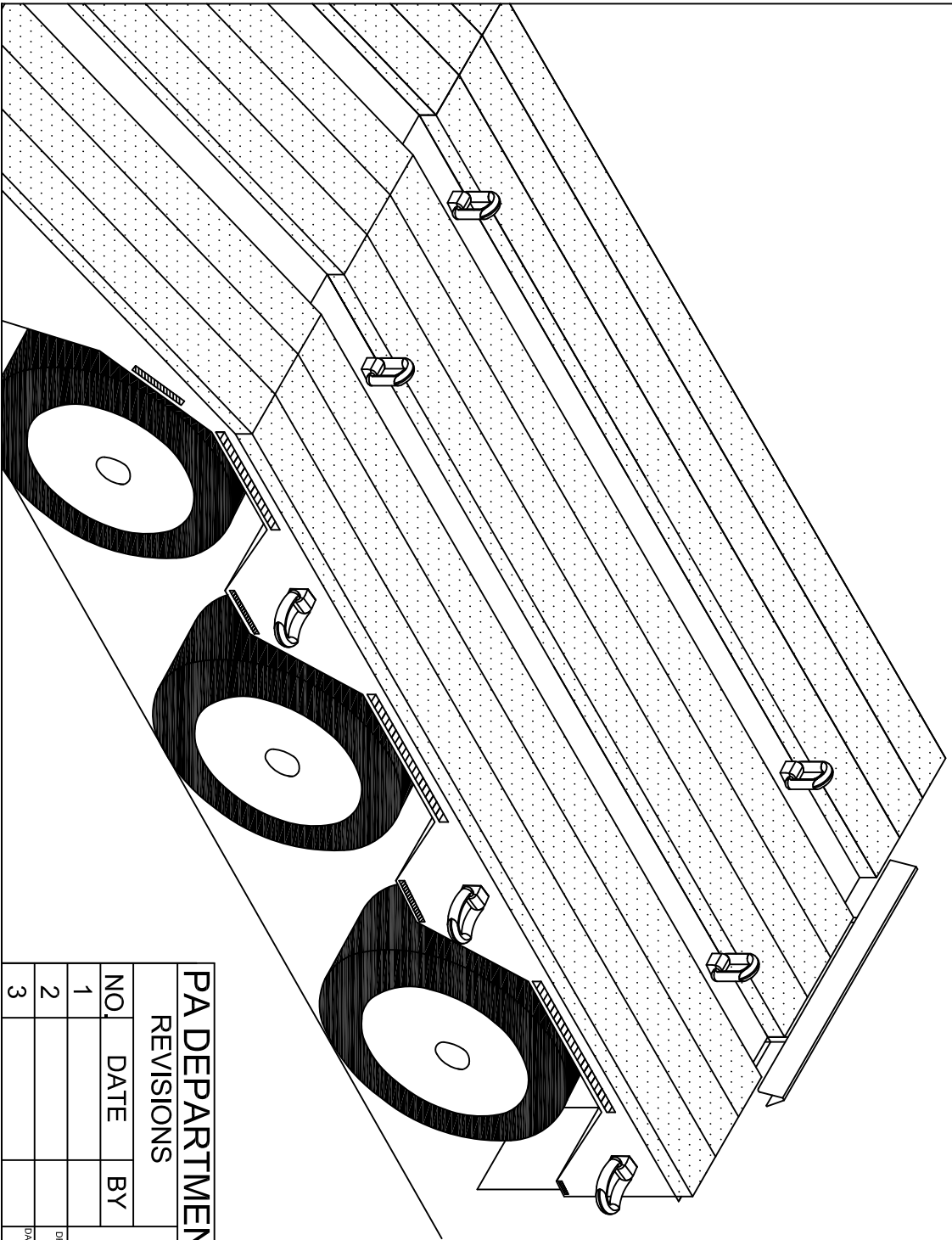
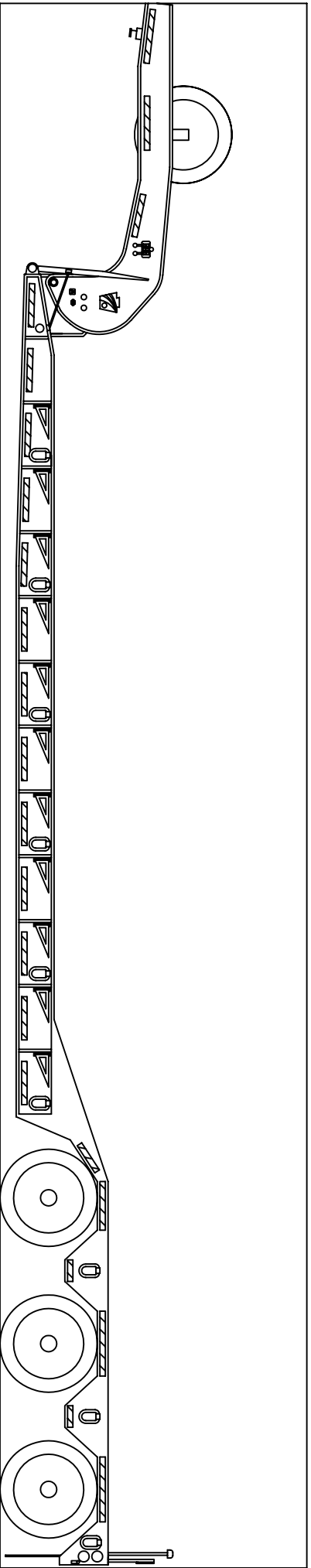
- F. LIGHT PACKAGE. WHELEN LIGHT KIT #PADOTS11. TWO OUTSIDE LIGHTS SHALL BE BRAKE/TURN LIGHTS AND INSIDE LIGHT SHALL BE AMBER WARNING LIGHT.
- G. SWITCH1. SHALL BE EXTERIOR SEALED WEATHER PROOF TYPE, AND PERMANENTLY LABELED THAT WILL ENABLE ON/OFF OF **ALL** (INCLUDING STROBE) LIGHTS.
- H. SWITCH2. SHALL BE EXTERIOR SEALED WEATHER PROOF TYPE, AND PERMANENTLY LABELED THAT WILL ENABLE ON/OFF OF STROBE LIGHT.
- I. LIFT AXLE SWITCH. ALLOWS USE OF REAR LIFT AXLE.

**PA DEPARTMENT OF TRANSPORTATION**

**REVISIONS**

**LOWBOY PAVER STYLE TRAILER**

NO.	DATE	BY	DRAWN BY	DATE
1	12-29-16	JJB	JJB	06-23-15
2	08-08-18	KBD	JJB	N/A
3				N/A



**PA DEPARTMENT OF TRANSPORTATION**

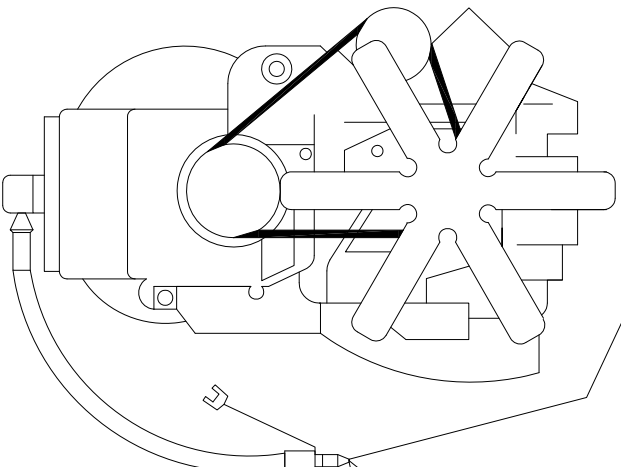
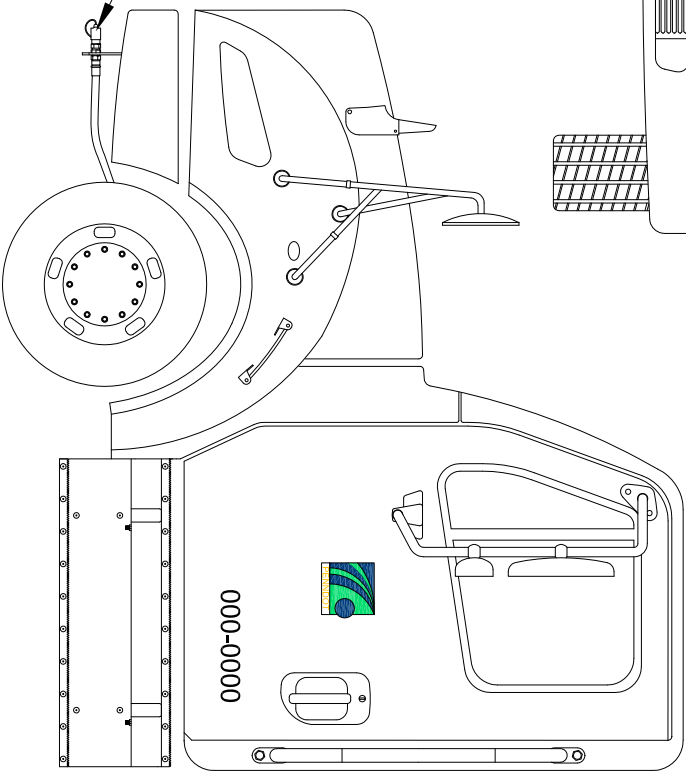
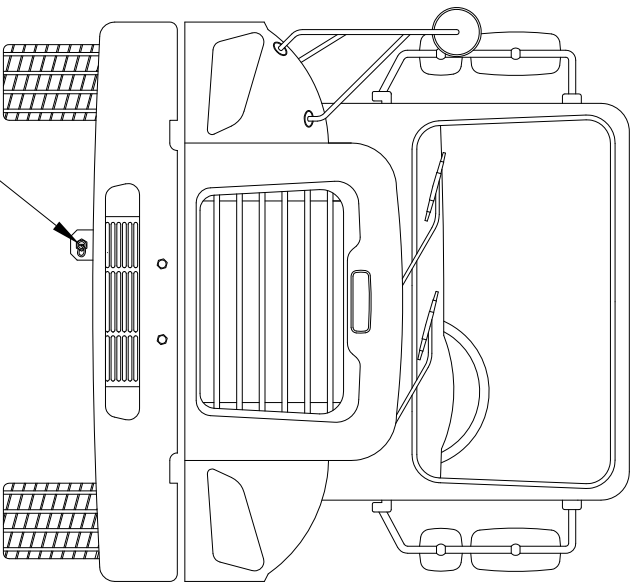
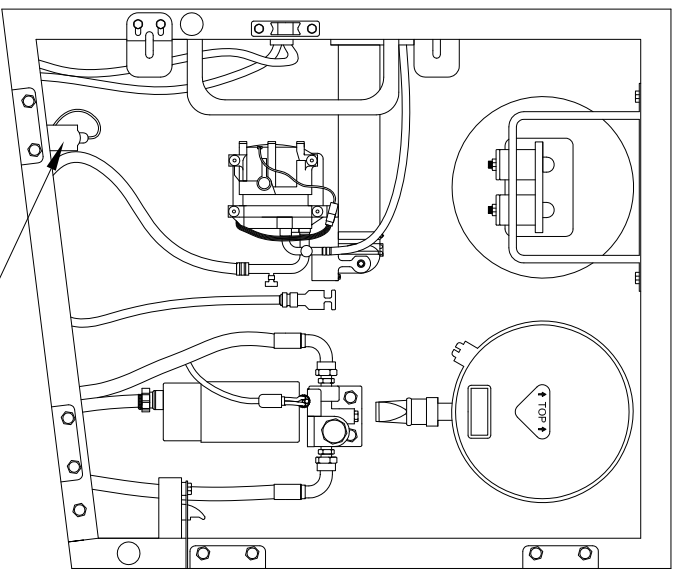
**REVISIONS**

NO.	DATE	BY
1		
2		
3		

**LOWBOY PAVER STYLE  
TRAIELRS**

DRAWN BY	KBD	Checked With		SHEET 250P
DATE	08-08-18	CHK'D BY	N/A	SHEET 5 OF 5
		Scale	N/A	





DISCONNECT  
COUPLING  
FLOCS  
ENGINE KIT

**PA DEPARTMENT OF TRANSPORTATION**

**REVISIONS**

NO.	DATE	BY	SCALE
1	07-01-03	BLD	N/A
2	10-20-06	CJW	N/A
3	06-19-13	JFM	N/A

**FAST LUBE OIL CHANGE SYSTEM  
OVERVIEW AND PARTS LIST**

NO.	DATE	BY	SCALE
1	07-01-03	BLD	N/A
2	10-20-06	CJW	N/A
3	06-19-13	JFM	N/A

000-0000



1. CONTACT AEROQUIP WITH YOUR DRAIN PAN PLUG SIZE
2. AEROQUIP DEALER TELEPHONE NUMBERS:

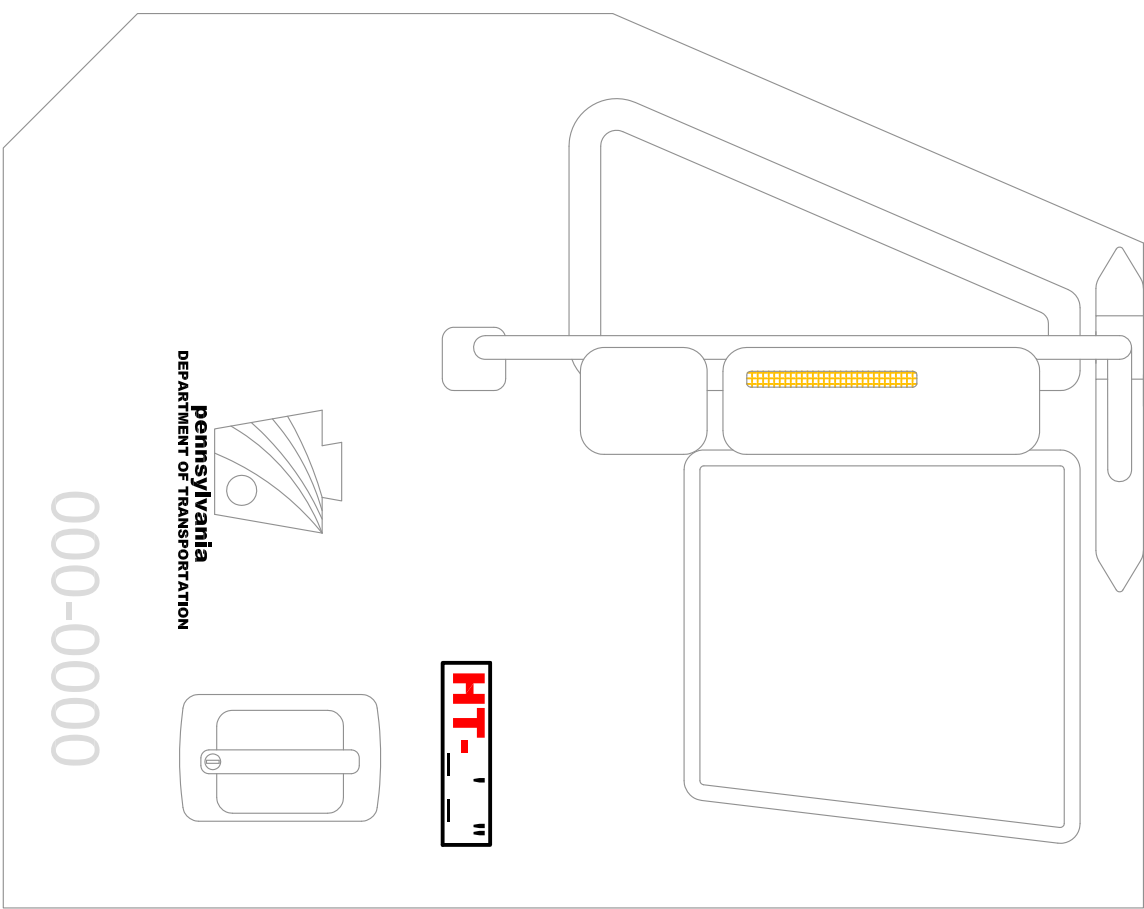
ADVANCED FLUID CONNECTORS..... 717-757-1068  
 AIR BRAKE & POWER EQUIPMENT CO.. 717-622-6188  
 AMERICAN BEARING & POWER..... 717-569-3291  
 GOODALL RUBBER COMPANY ..... 610-534-2100  
 POWER DRIVES INC..... 814-833-8181  
 R L MILLER INC..... 412-833-6800  
 R L MILLER INC..... 814-456-8900  
 SRG/BEVCO..... 610-358-3100  
 VOTO MANUFACTURERS SALES CO.... 814-226-7101

**FLOCS SHALL INCLUDE, BUT NOT LIMITED TO:**

- A. DUST CAP 5657-12
- B. HOSE TO SUIT LENGTH
- C. HOSE FITTING TO SUIT
- D. ADAPTER TO SUIT
- E. HOSE CLAMP #900729-6
- F. BRACKET TO SUIT
- G. COUPLING 5602-12-12S

**PA DEPARTMENT OF TRANSPORTATION**

REVISIONS			FAST LUBE OIL CHANGE SYSTEM OVERVIEW AND PARTS LIST		
NO	DATE	BY	SCALE	CHK'D BY	
1	07-01-03	BLD	DLW	N/A	EQN-351A
2	10-20-06	CJW			
3	06-19-13	JFM			



THERE SHALL BE A PERMANENT DECAL, 2 INCH HIGH RED LETTERS ON WHITE BACKGROUND AFFIXED BY THE DRIVER SIDE DOOR HANDLE OR OPERATOR STATION STATING THE OVERALL MAXIMUM TRAVEL HEIGHT OF THE COMPLETED AND UNLOADED UNIT.

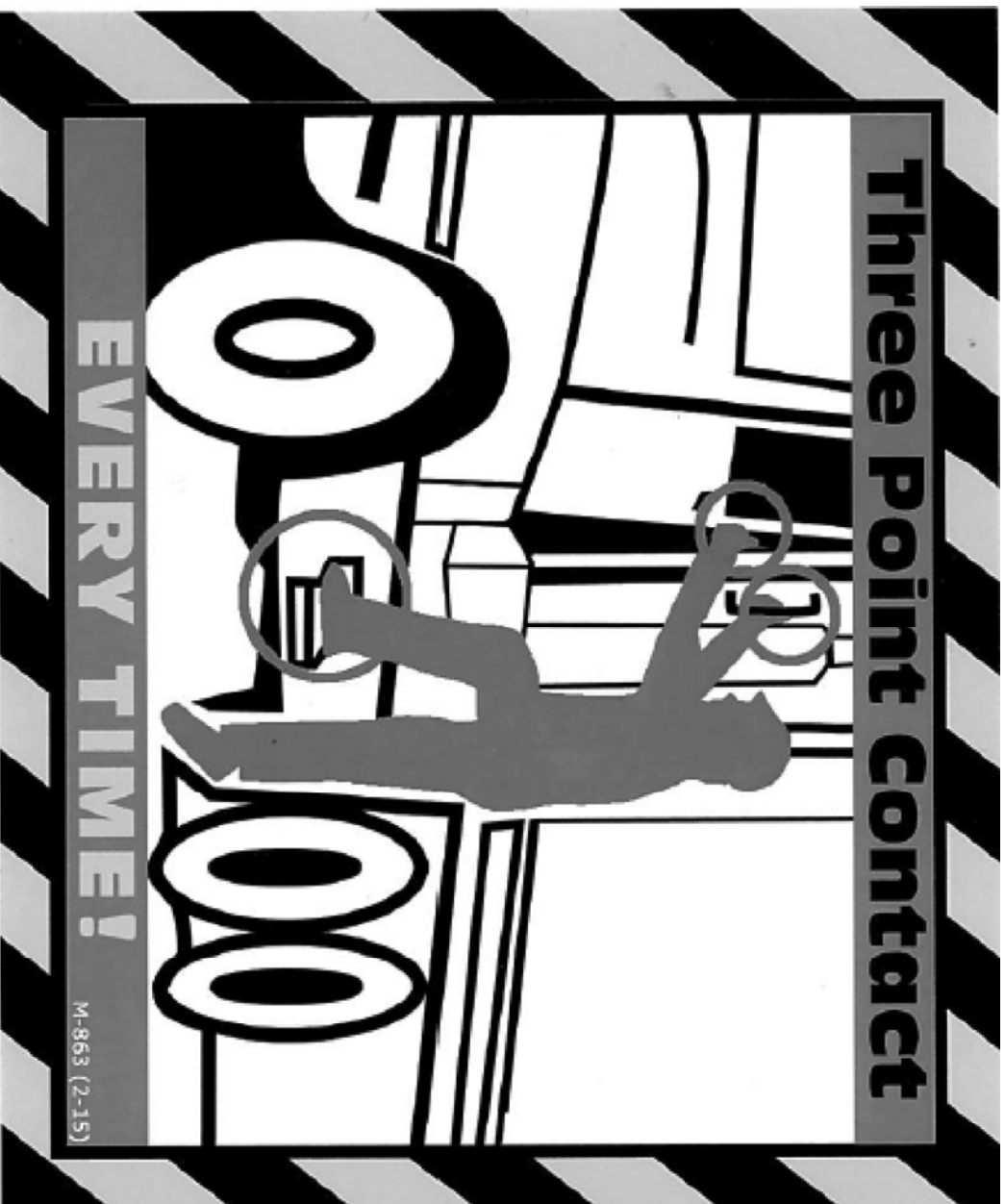
**PA DEPARTMENT OF TRANSPORTATION**

**REVISIONS**

NO.	DATE	BY
1	07-06-17	HMR
2	07-25-18	KBD
3		

**MAX TRAVEL HEIGHT STICKER**

DRAWN BY	JFM	Checked With	
DATE	05-29-13	DATE	05-29-13
SCALE	2	SCALE	2
			EQN-552
			SHEET 1 OF 1



THERE SHALL BE THREE (3) PERMANENT DECALS, 4 INCH HIGH X 5 INCH WIDE, ONE EACH TO BE AFFIXED BY THE DRIVER, PASSENGER SIDE DOOR HANDLES AND THE DUMP BODY LADDER.

**PA DEPARTMENT OF TRANSPORTATION**

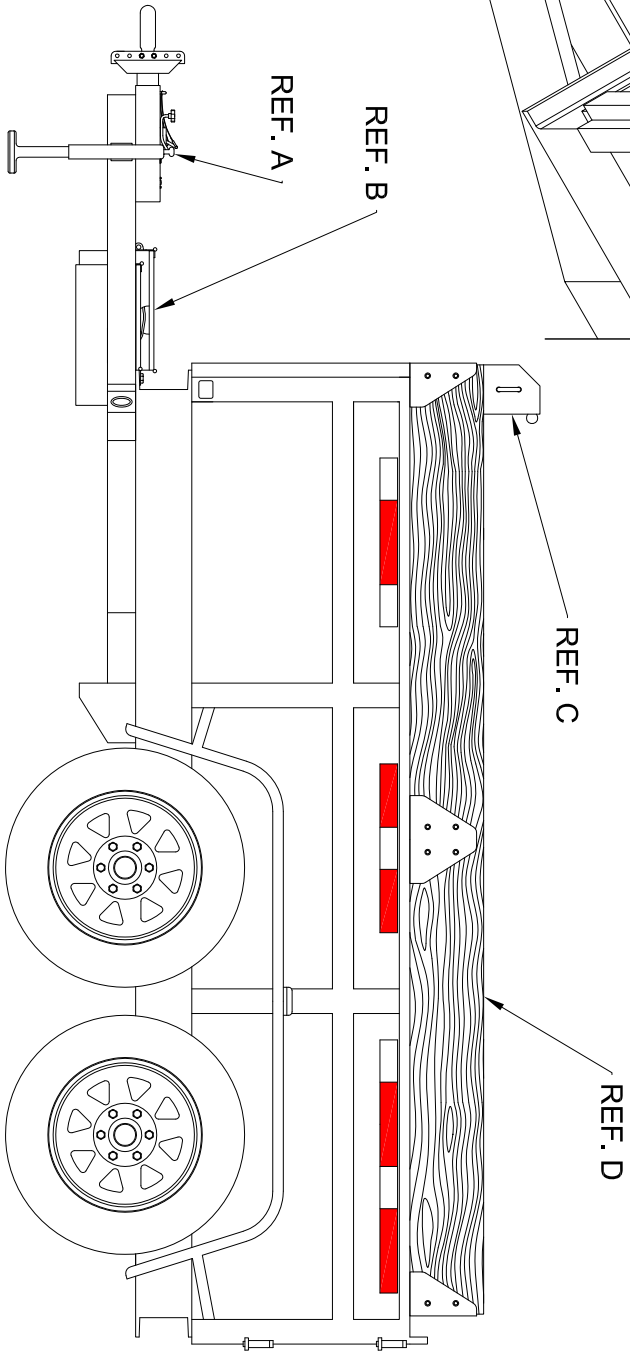
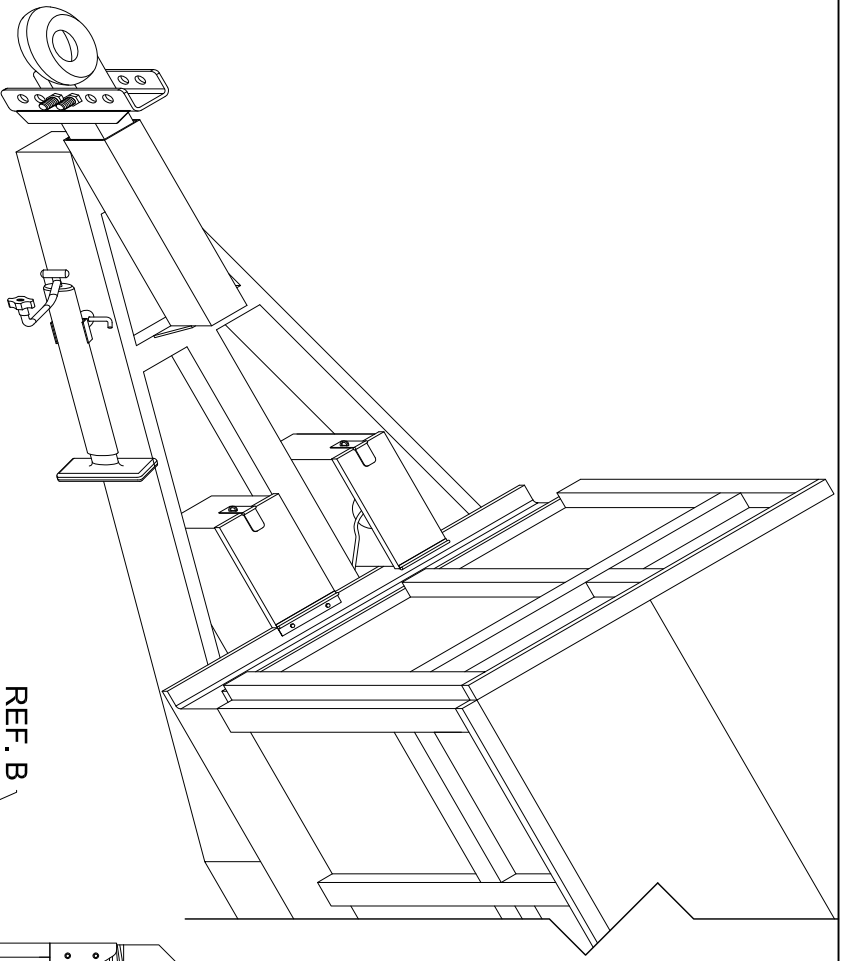
**REVISIONS**

**THREE POINTS OF CONTACT STICKER**

NO.	DATE	BY	INT	DRAWN BY	SCALE	CHKD BY	DATE
1	00-00-00			GAW	N/A	TOD	03-23-15
2							
3							

EQN-552-1

SHEET 1 OF 1



**NOTES:**

- A. MIN 7000 LB. SWINGING JACK WITH FOOT PLATE. MUST BE ABLE TO TRAVEL IN HORIZONTAL POSITION.
- B. POWER AND CONTROL BOXES MAY NOT EXTEND OVER TOP OF FRAME BY MORE THAN 2 INCHES.
- C. EQUIPPED WITH MANUAL TARPING DEVICE.
- D. EQUIPPED WITH 2" x 10" EXTENDED SIDE BOARDS WITH METAL CORNER SUPPORTS.

**PA DEPARTMENT OF TRANSPORTATION  
LITTER DUMP TRAILER**

REVISIONS					
NO.	DATE	BY			
1	00-00-00	INT			
2					
3					

DRAWN BY	JFM	SCALE	N/A	EQN-555
DATE	07-15-13	CHECKED BY	INT	SHEET 1 OF 1